



Swedish Agency
for Marine and
Water Management

Mozambique

SOFALA bank



MSP WIO Symphony technical training

October 2024



Swedish Agency
for Marine and
Water Management

Name and expertise of team members

1. **Anselmo Gaspar** - National Directorate of Environment (Ministry of Land and Environment)
2. Araujo Andicene - National Maritime Institute (Ministry of Sea, Inland Waters and Fisheries)
3. Clousa Maueua - Oceanographic Institute of Mozambique
4. Daniela Macuacua - Oceanographic Institute of Mozambique
5. **Isolda Dlamine** - Space Development Agency (Ministry of Transport and Communication)
6. Marta Zita - National Maritime Institute (Ministry of Sea, Inland Waters and Fisheries)
7. **Rabeca Nhancale** - National Cartography and Remote Sensing Center (Ministry of Land and Environment)
8. **Sofia Chambe**- National Directorate of Land and Territorial Development (Ministry of Land and Environment)

Planning objectives



Swedish Agency
for Marine and
Water Management

- » Reduce pressure from Artisanal fishing and promote aquaculture;
- » Ecosystems preservation;
- » Achieve blue economy;
- » Integrated marine and coastal zone management;
- » Reduce pressure from Oil and Gas activities;
- » To ensure participation of all stakeholders on decision making regarding natural resources exploration.

Policies

» Policies



RJUEM

Regulation Establishing the Legal Regime for the Use of the National Maritime Space (Decree No. 21/2017, May 24th)

Fits the demand for the sea and coastal areas for the development of various economic activities (Resolution No. 39/2017, September 14th)

Law of the Sea

Establishes the legal regime applicable to the exercise of sovereign and jurisdictional powers over the national maritime space, the exploitation of living and non-living marine resources, as well as the use of the marine public domain, with a view to ensuring the conservation, preservation and use for the sustainable development of the national maritime space (Law No. 20/2019 of November 8)



Swedish Agency for Marine and Water Management

Five Year government planning

2020 - 2025

Priority III: Strengthen the Sustainable Management of Natural Resources and the Environment

Law of Territorial development

Summit instrument of the territorial management system of Mozambique

Law of the Environment

Environmental Policy and Law
Law of Biodiversity Conservation



Drivers, political interest



Swedish Agency
for Marine and
Water Management

Drivers

- » Increases community income by increasing artisanal fishing and aquaculture;

Political Interest

- » Develop blue economic that relay on energy and tourism sectors

Focus sector

- » Fishing
- » Tourism
- » Conservation areas



Swedish Agency
for Marine and
Water Management

Supporting data layers



Swedish Agency
for Marine and
Water Management

» WIO Symphony data

- Mangrove
- Seagrass
- Coral reef
- Salt marsh
- Floating longline
- Aquaculture potential

» National data

- Conservation areas
- Protected areas
- Aquaculture potential
- Marine habitats

Potencial study areas



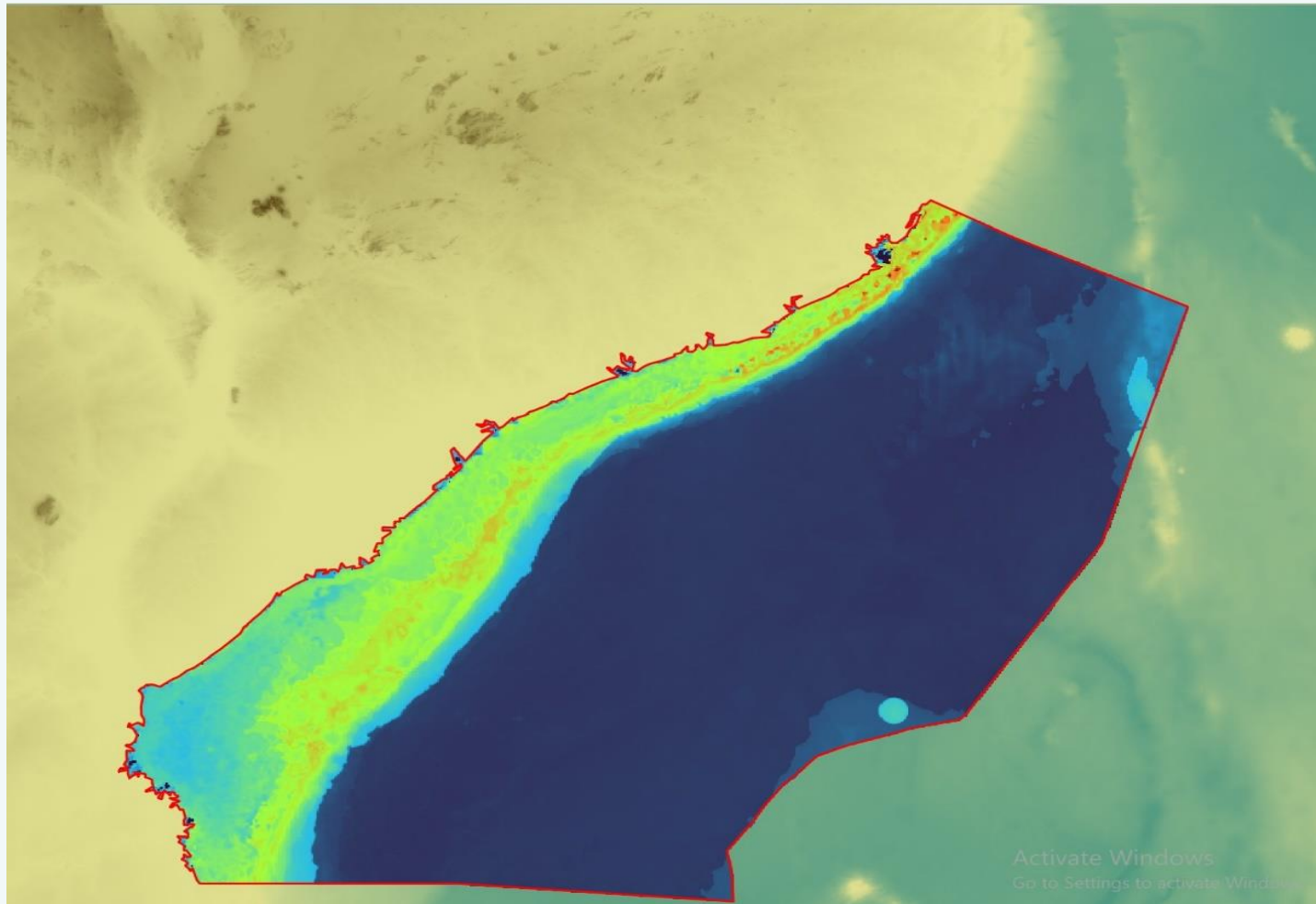
Swedish Agency
for Marine and
Water Management



Study area



Swedish Agency
for Marine and
Water Management





Swedish Agency
for Marine and
Water Management

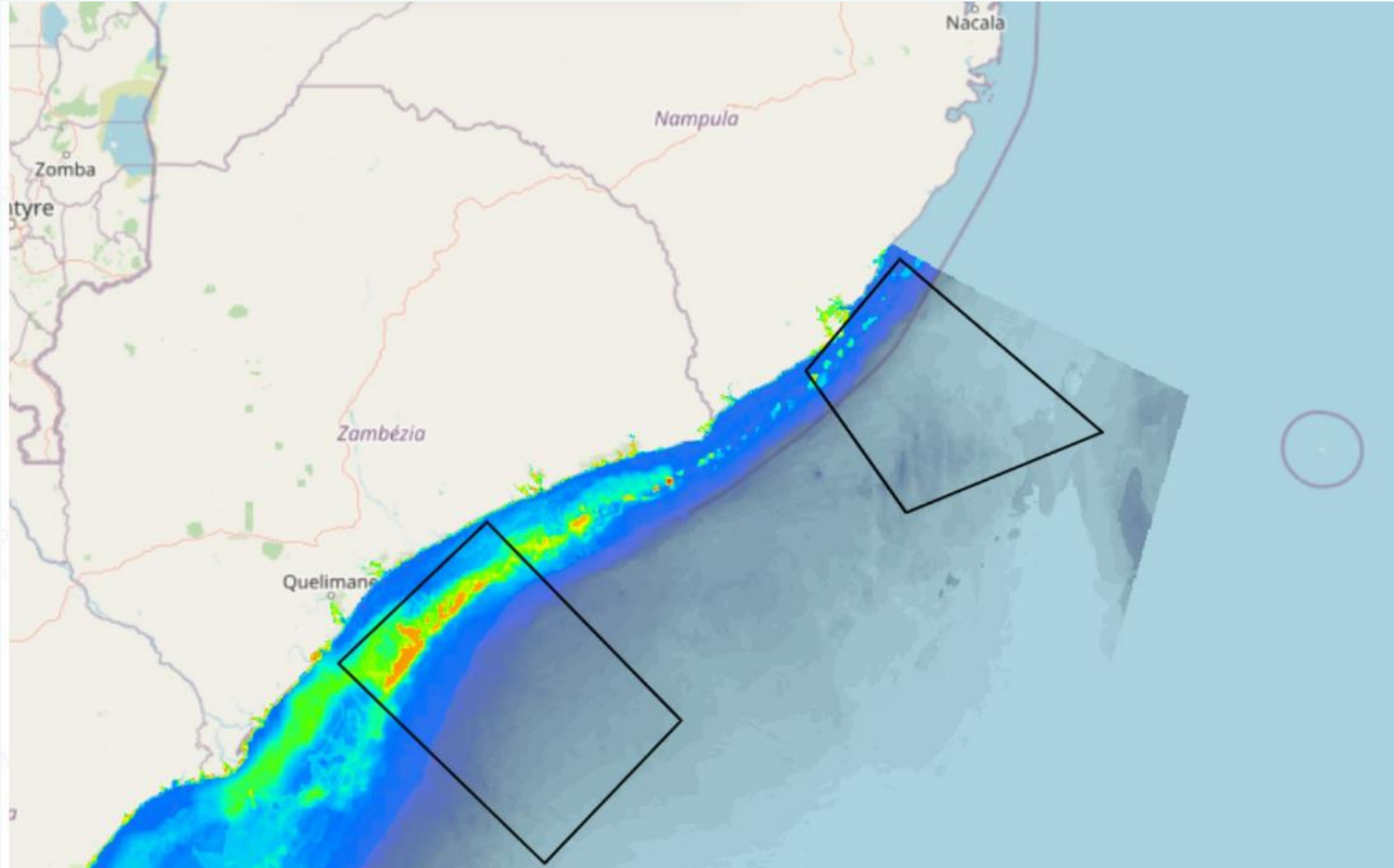
Justification about the chosen areas

- » Existence of key habitats relevant to species reproduction (Mangrove, Seagrass, Coral reef);
- » This region presents poorest socio-economic development.

Baseline data on artisanal fishing(cumulative impact)



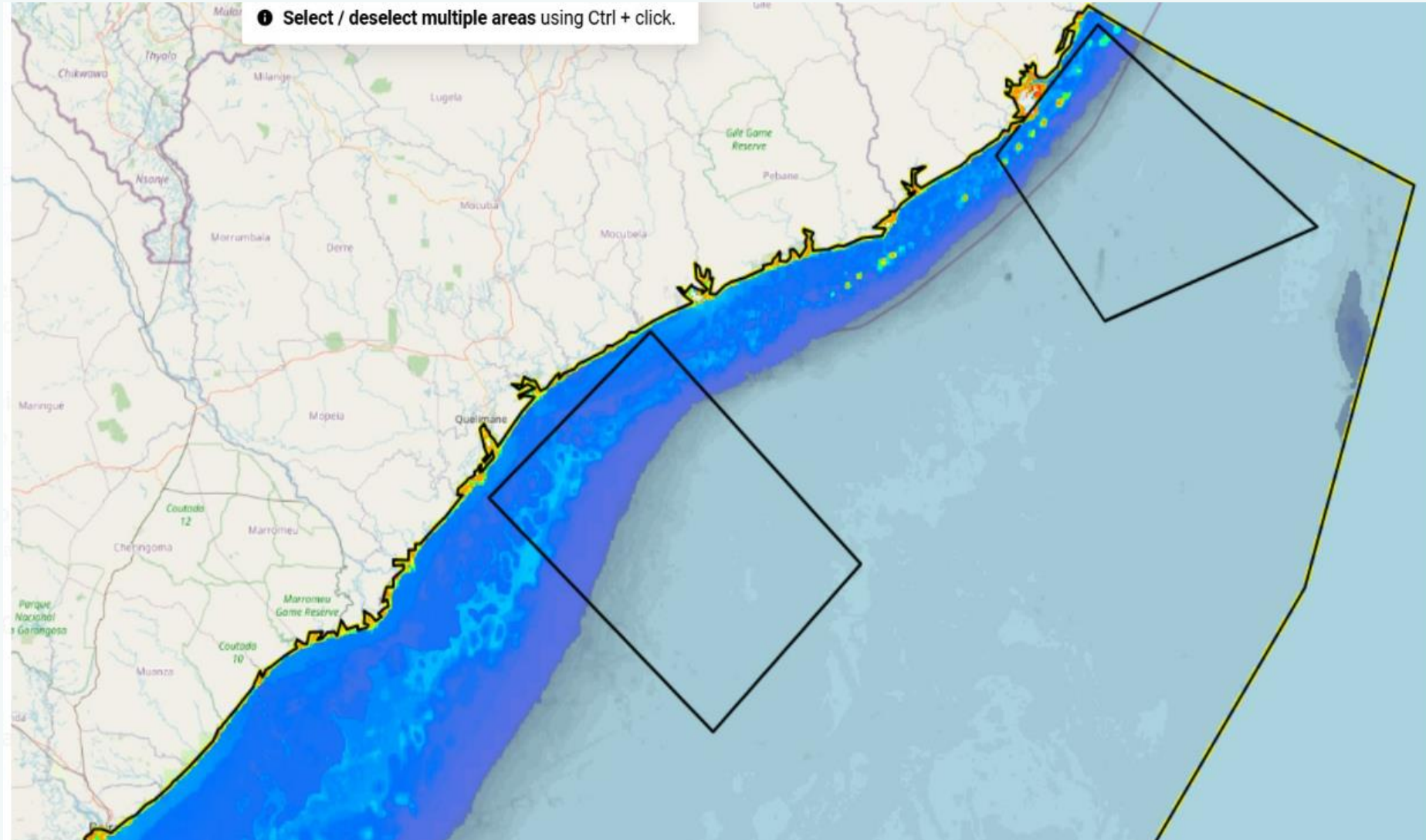
Swedish Agency
for Marine and
Water Management



Baseline data on artisanal fishing(Rarity-adjusted cumulativimpact, use Maximum value in area)



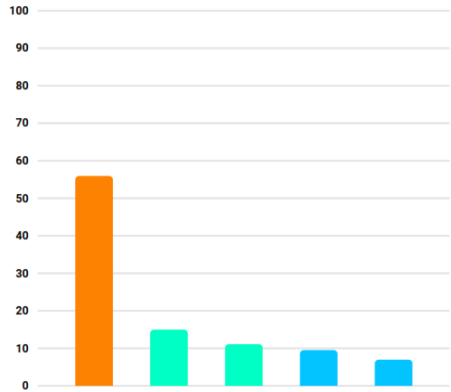
Swedish Agency
for Marine and
Water Management



Baseline data on artisanal fishing(cumulative impact)

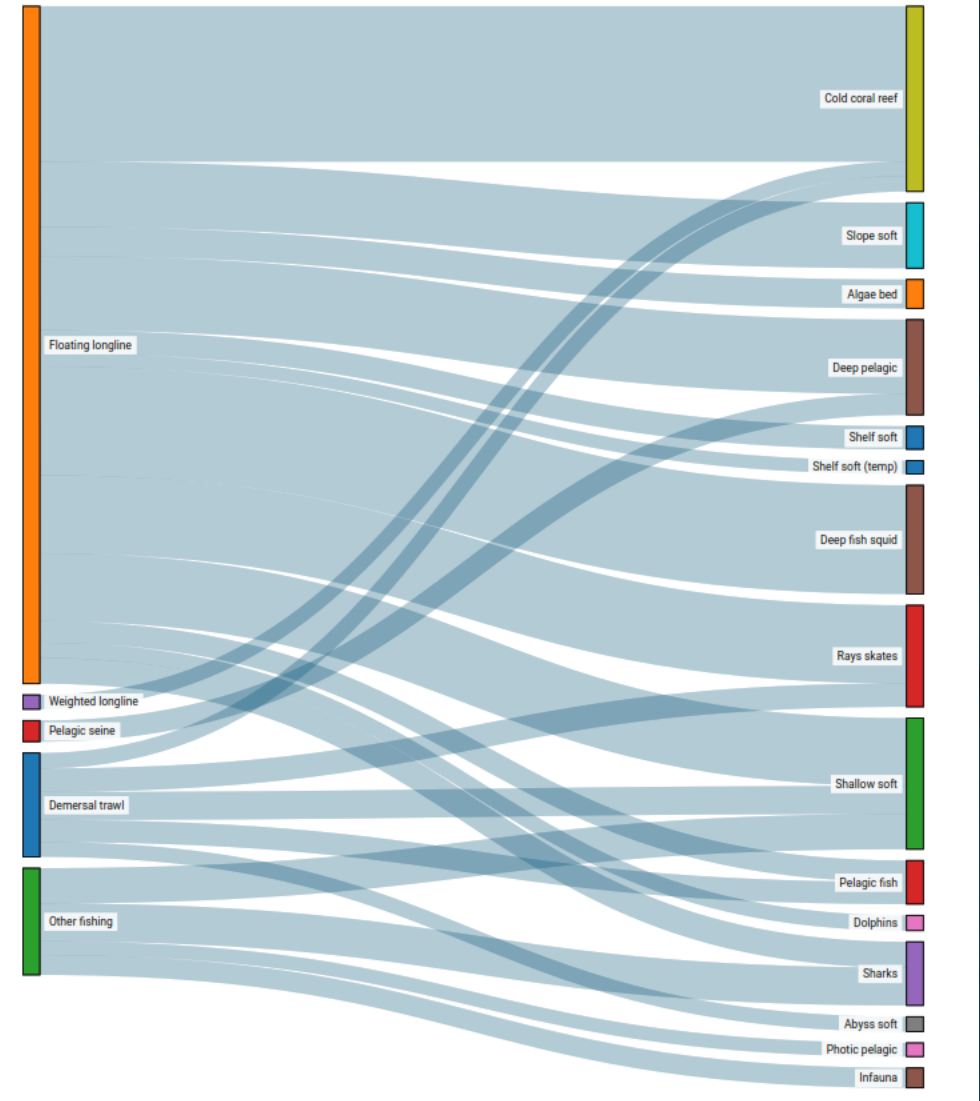
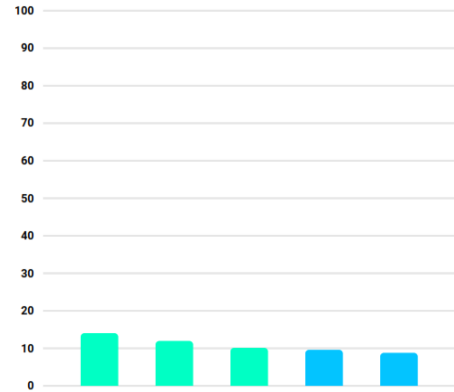
Pressures with highest impact

Floating longline	55.91%
Demersal trawl	14.95%
Other fishing	11.07%
Weighted longline	9.49%
Pelagic seine	6.95%



Nature values with highest impact

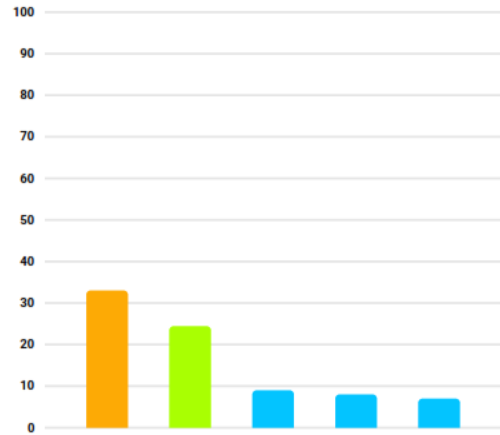
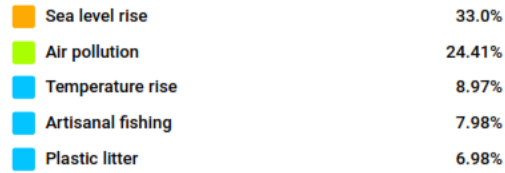
Cold coral reef	14.02%
Shallow soft	11.94%
Deep fish squid	10.12%
Deep pelagic	9.58%
Rays skates	8.77%



for

Baseline data on artisanal fishing (Rarity-adjusted cumulative impact, use Maximum value in area)

Pressures with highest impact



Nature values with highest impact

