



INAMAR, IP
Instituto Nacional do Mar, IP



Mozambique Maritime Spatial Planning

POEM

**MSP Capacity Building 21-25 October
Zanzibar, Tanzania**

24th October 2024

Presentation Structure



- Legal Framework
- Scope and Objective of POEM
- POEM Contents
- POEM Implementation Actions
- POEM WebSIG
- Challenges

Legal Framework

Law of the Sea

POLMAR

Fits the demand for the sea and coastal areas for the development of various economic activities (Resolution No. 39/2017, September 14th)

Establishes the legal regime applicable to the exercise of sovereign and jurisdictional powers over the national maritime space, the exploitation of living and non-living marine resources, as well as the use of the marine public domain, with a view to ensuring the conservation, preservation and use for the sustainable development of the national maritime space (Law No. 20/2019 of November 8)

Five Year Program government planning

2020 - 2025

Priority III: Strengthen the Sustainable Management of Natural Resources and the Environment

Law of Territorial development

Summit instrument of the territorial management system of Mozambique

Law of the Environment

Environmental Policy and Law
Law of Biodiversity Conservation

RJUEM

Regulation Establishing the Legal Regime for the Use of the National Maritime Space (Decree No. 21/2017, May 24th)

Scope and Objectives of POEM



a) Scope

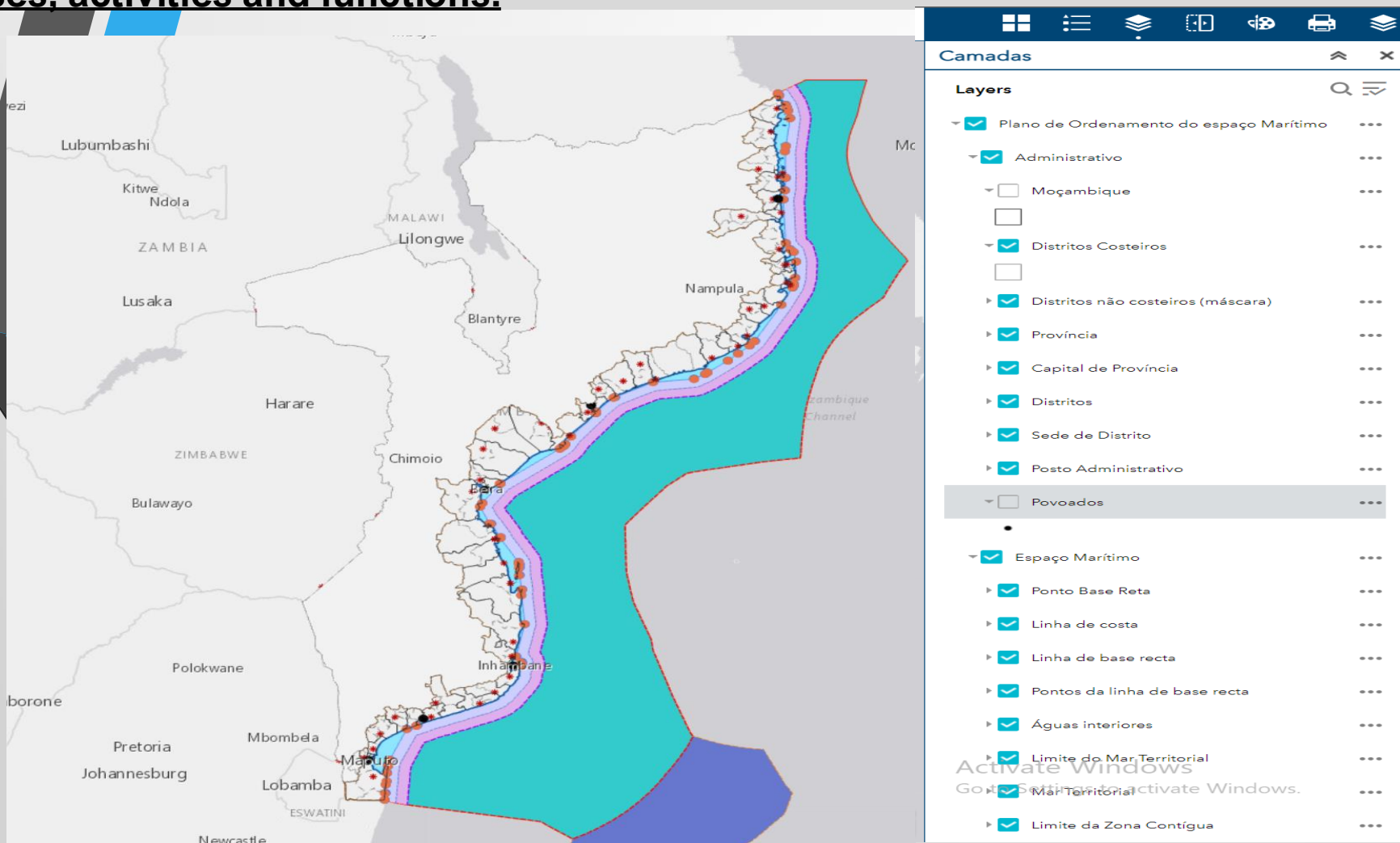
POEM anticipates trends and forecasts for growth or development of sectors that occur in maritime space, in order to **avoid the generation of conflicts and environmental degradation**, promoting economic, social, cultural and scientific development, and synergies by optimizing the use of natural resources.

b) General Objective

Promote the sustainable, rational and efficient economic exploitation of the sea and marine resources and ecosystem services, ensuring the **compatibility and sustainability** of the various uses and activities carried out therein.

POEM Contents

Geospatial representation of information obtained within the scope of inventories and characterizations carried out , including the **distribution of existing and potential values, uses, activities and functions.**

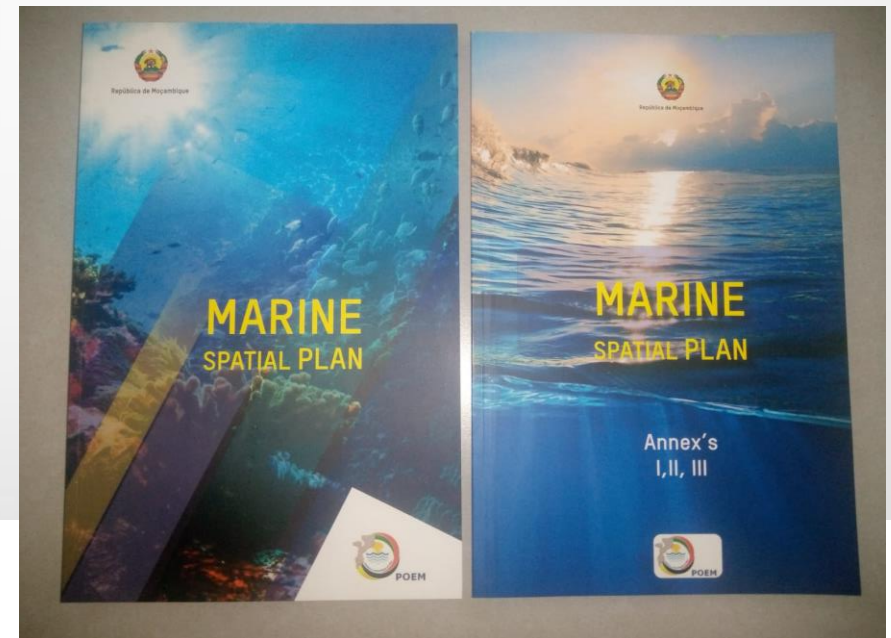


POEM approval



Plan approved by the Council of Ministers in November 2021

Launched on the sidelines of the 1st edition of the Crescendo Azul conference by the President of Mozambique Republic.





POEM Implementation

1. POEM WebSIG Page Replacement

- Page response by the Geospatial Development Agency – ADE,
<https://www.mozgis.gov.mz/portal/apps/webappviewer/index.html?id=c346ae7b471b42f1bcc1f598a3b9b060>
- INAMAR staff trained to manage the POEM Web-SIG Platform;

2. Specific Planning for the Districts of Moma and Machanga ;

- It will be implemented within the scope of the project A Partnership for Marine and Coastal Governance and Fisheries Management for sustainable blue growth”

POEM Implementation



3. Special Land Use Plan for the Primeiras and Segundas Islands

Under development in coordination with National Administration of Conservation Areas of Ministry of Land and Environment.

4. The Inhambane Territorial Development Plan was developed, which has a 700 km coastline with an Ecosystem Conservation approach. Through a multi-sectoral team

5. Systematization of TUPEM management

Development of a system that will allow the management of the Private Use Title of Maritime Space - TUPEM

6. Planning and Management of the Coastal Zone and Beaches; (Model Beach – Macaneta)

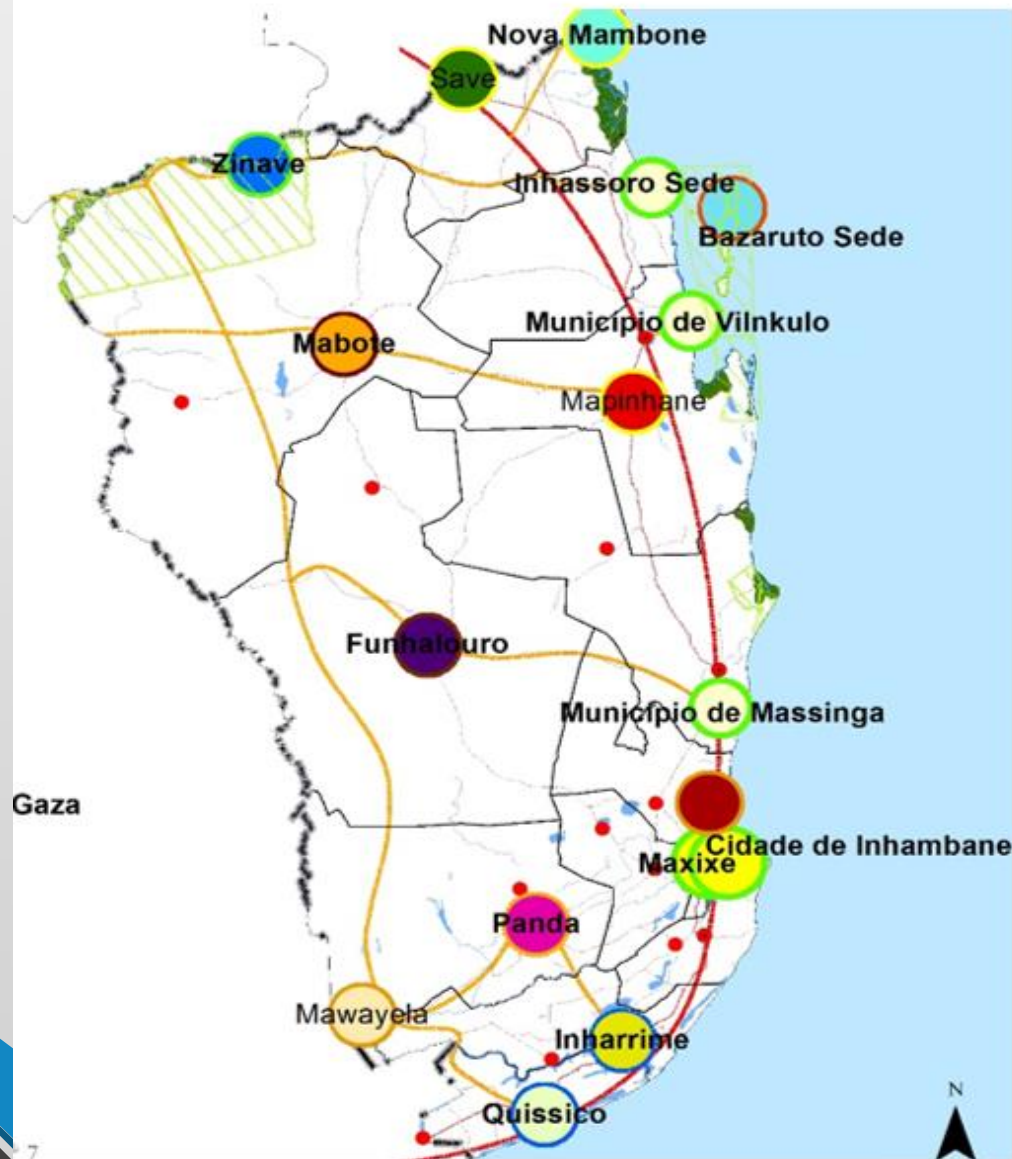
In process of beach signage, construction of watchtowers, construction of gates, porches for activities economics, placement of drums for solid waste management and Categorization, Organization of activities economic and access to bathing areas.



7. INHAMBANE PROVINCIAL TERRITORIAL DEVELOPMENT PLAN (PPDTI)



Cenário 2 -Centrado na Sustentabilidade ecológica



Áreas de Conservação

- Áreas de Conservação
- Proteção e restauração do mangal

Corredores de desenvolvimento

- Corredor de ligação para centros de produção
- Corredor de ligação zona sul e centro do país

Rede Hidrografica

- Rios e Lagoas
- Preservação da paisagem

Pólos de desenvolvimento Turismo e conservação dos ecossistemas

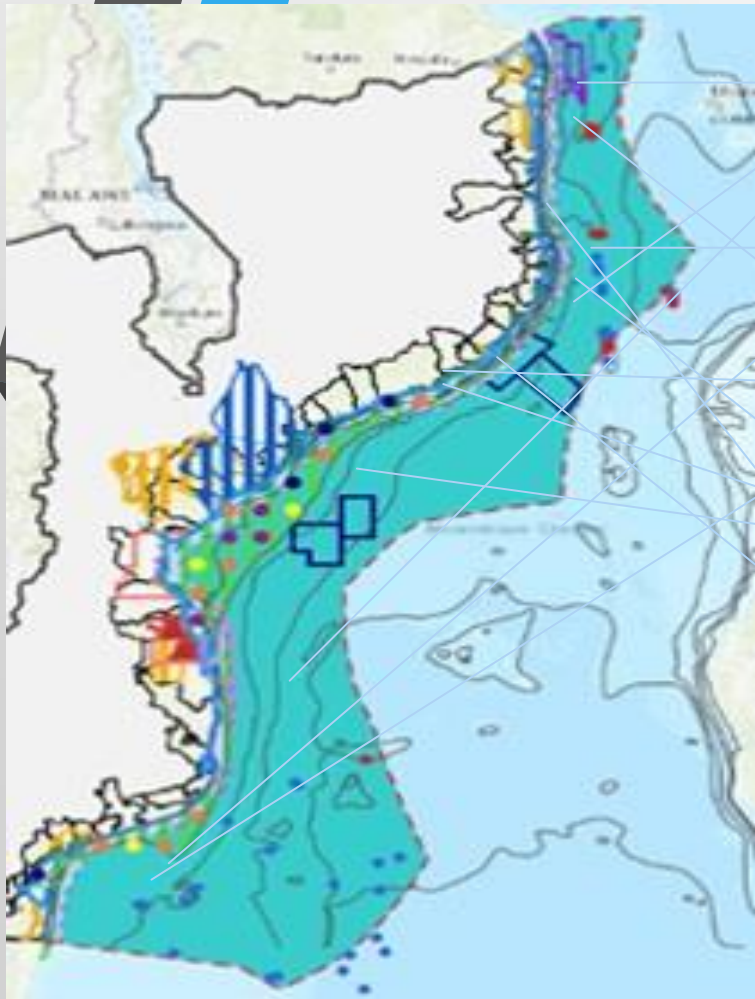
- zinave
- Bazaruto

Elaboa

POEM Implementation



Issuance of Different Titles for Private Use of Maritime Space – TUPEM



Port Infrastructure

Submarine cables and
pipelines

Hospitality and
Tourism

Extraction of Mineral
Resources

Aquaculture

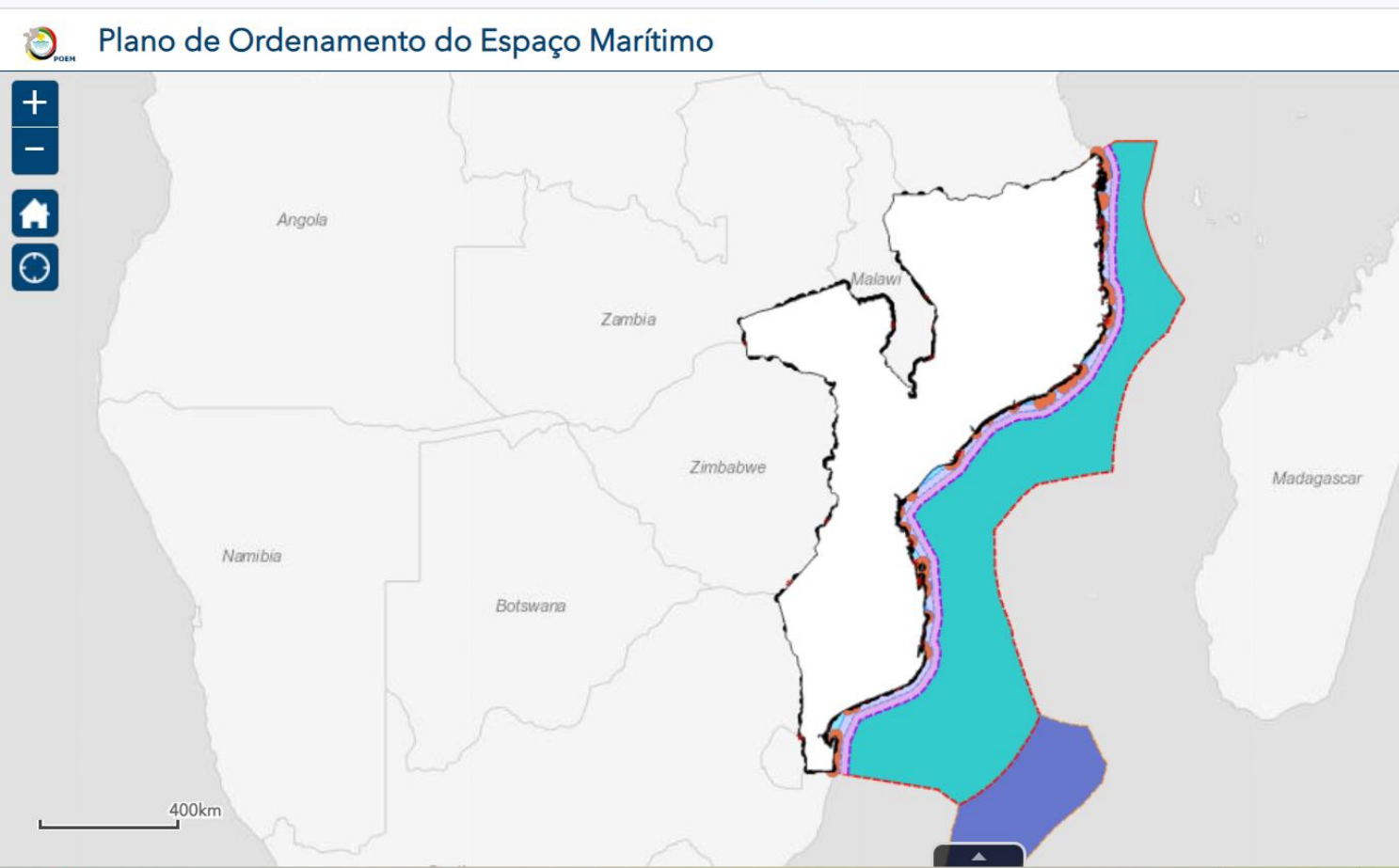
POEM WebSIG



Browser tabs: Caixa de... Plano de... TUPEM x TUPEM x teams.n x Update x Plano de x WhatsApp x TUPEM Nica x

Address bar: mozgis.gov.mz/portal/apps/experiencebuilder/experience/?id=1da5994c127e4b169f49d47b73e15a44

Search bar: List of Australian go... Governo de Moçam... ear Gmail YouTube Maps



Camadas

- Mar Territorial
- Limite da Zona Contígua
- Zona Contígua
- Limite da Zona Económica Exclusiva
- Zona Económica Exclusiva (ZEE)
- Extensão da Plataforma Continental
- Área da Política e Estratégia do Mar (POLMAR)
- Condições Naturais do Espaço Marítimo
- Faixa Costeira
- Batimetria
- Canal de Moçambique: Linhas batimétricas
- Canal de Moçambique: Pontos da batimetria

Windows taskbar with icons for Start, Search, File Explorer, Edge, Chrome, Word, PowerPoint, and system tray showing time 08:32 and date 10/06/2024.

Challenges / Perspectives



1. Intersectoral Technical Group ;
2. Equipment with data management capabilities;
3. Development of a system/application that will allow the management of TUPEM;
4. Need to develop the MSP jointly in the Region – WIO, to improve the Management of the Sea and its Ecosystems (in a Transboundary Approach);
5. Northern Mozambique Channel Programme (NOCAMO);
6. Mobilization of resources to implement the planned activities .



Thank you very much



INAMAR, IP

Instituto Nacional do Mar, IP

Maritime Authority