



Recap for MSP Capacity

Eunice King'ori
Nairobi Convention Secretariate - UNEP

25 September 2024

Day 1

- **MSP:** Public process to allocate spatial and temporal human activities
- **Objectives:** Ecological, economic, and social (politically driven)
- **Ecosystems:** The foundation for sustainable development

80% of MSP is communication

MSP cycle 6 steps

Key Benefits of WIO Symphony During MSP

Data and metadata showing human pressures, ecosystem components, sensitivity and impact for baseline analysis and boundary setting

Data metrics could be used to monitor change over time (with future data updates)

Standardized, maps reports and data suitable for publications and explaining MSP decisions

1. Setting the scene

2. Designing the planning process

3. Assessment for planning

4. Developing the marine spatial plan

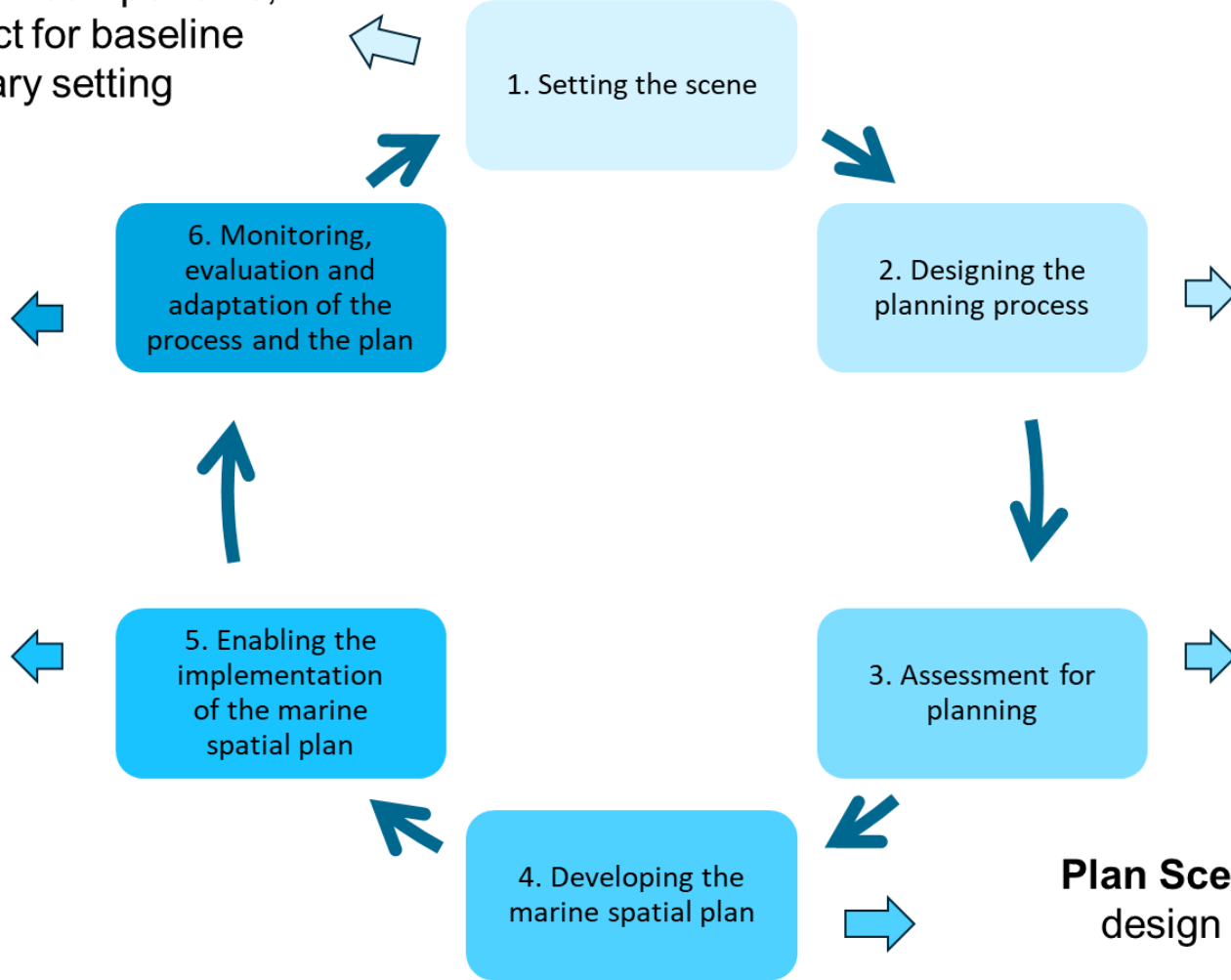
6. Monitoring, evaluation and adaptation of the process and the plan

5. Enabling the implementation of the marine spatial plan

Maps and infographics for stakeholder discussions

Custom impact Assessment by activity, sector or ecological components

Plan Scenario Comparison for design of a zonation plan with minimal impact



SWIOFC-NC PP2

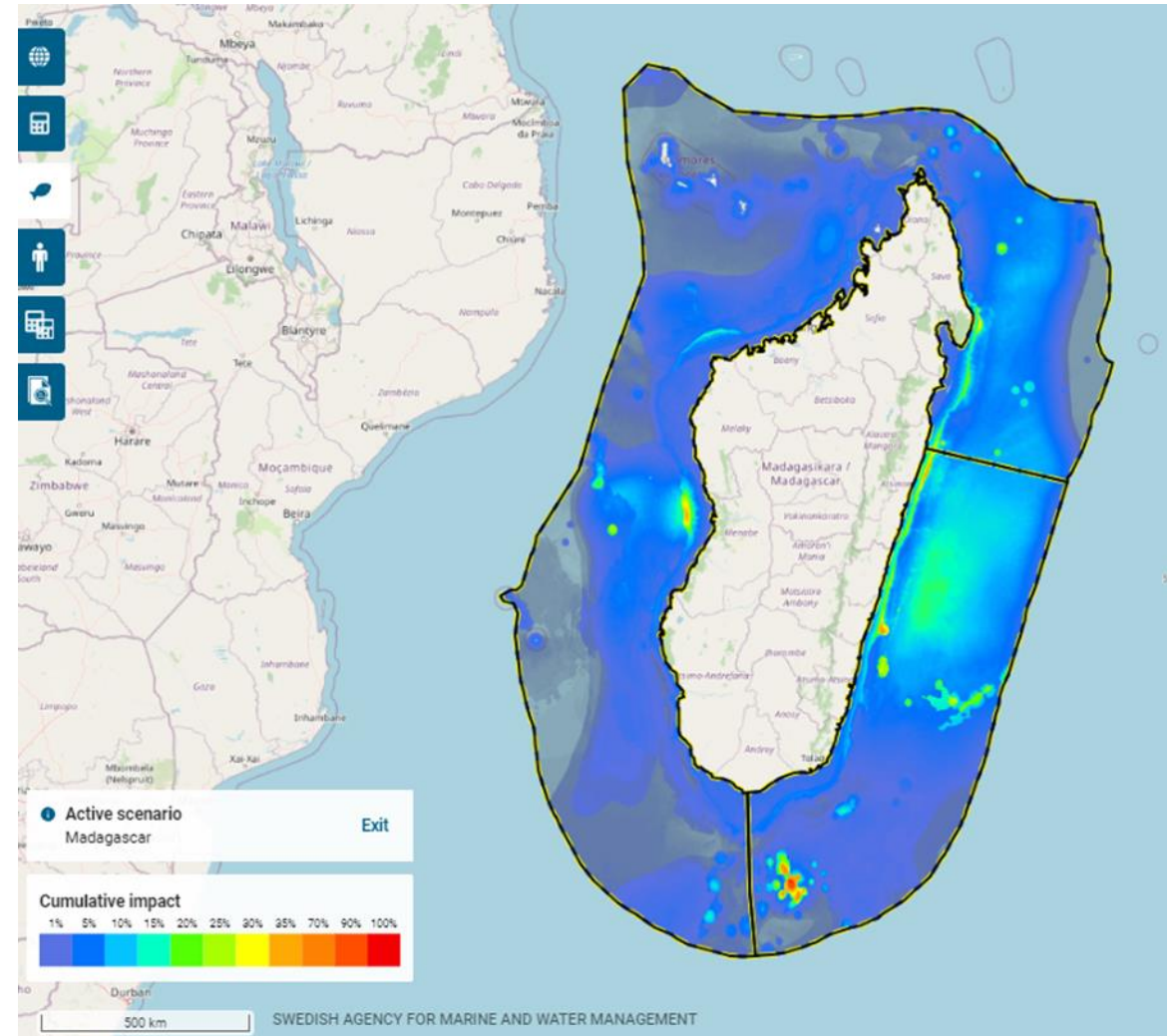


www.acpmeas.com



Key Analytical Functions of WIO Symphony

1. Estimating current cumulative impacts
2. Estimating potential cumulative impacts
3. Estimating the potential ecosystem benefits of protection or activity restriction
4. Rarity-weighted impact assessment



DEMO of WIOSYMPHONY

WIO Symphony

https://symphony.nairobiconvention.org/login

Western Indian Ocean
SYMPHONY

Username
sgu.common

Password
.....

LOG IN

India, Viet Nam, Philippines, Malaysia, Indonesia

Day 1

Exercises

Exercise 1

Identify Planning objective & Finding the support data

Gather supporting data for planning objectives

Choosing specific sector

Examine & select WIO Symphony layers & additional data which are necessary for supporting your planning sector/objective (identified before the meeting)

Outcome: Explain your planning objectives, drivers & a focus sector. Identified supporting layers from WIO Symphony and data

Exercise 2

Selecting planning area options

Draw & digitize planning areas options

Digitize and delimitate your planning areas based on supporting WIO Symphony layers & national data

Outcome: Identified and digitized polygons of planning areas options

Day 2

Exercise 3

Environmental assessment of planning scenarios

Impact Assessment using WIO Symphony

Create the baseline scenarios of your planning options and comparing with

Scenario 1:
Sector growth focus

Scenario 2:
Environmental health focus

Outcome: A group discussion on how to balance the two analyses, key trade-offs, and differences between the two scenario calculations

Exercise 4

Summary and conclusion
Evaluation & interpretation of results

Present results

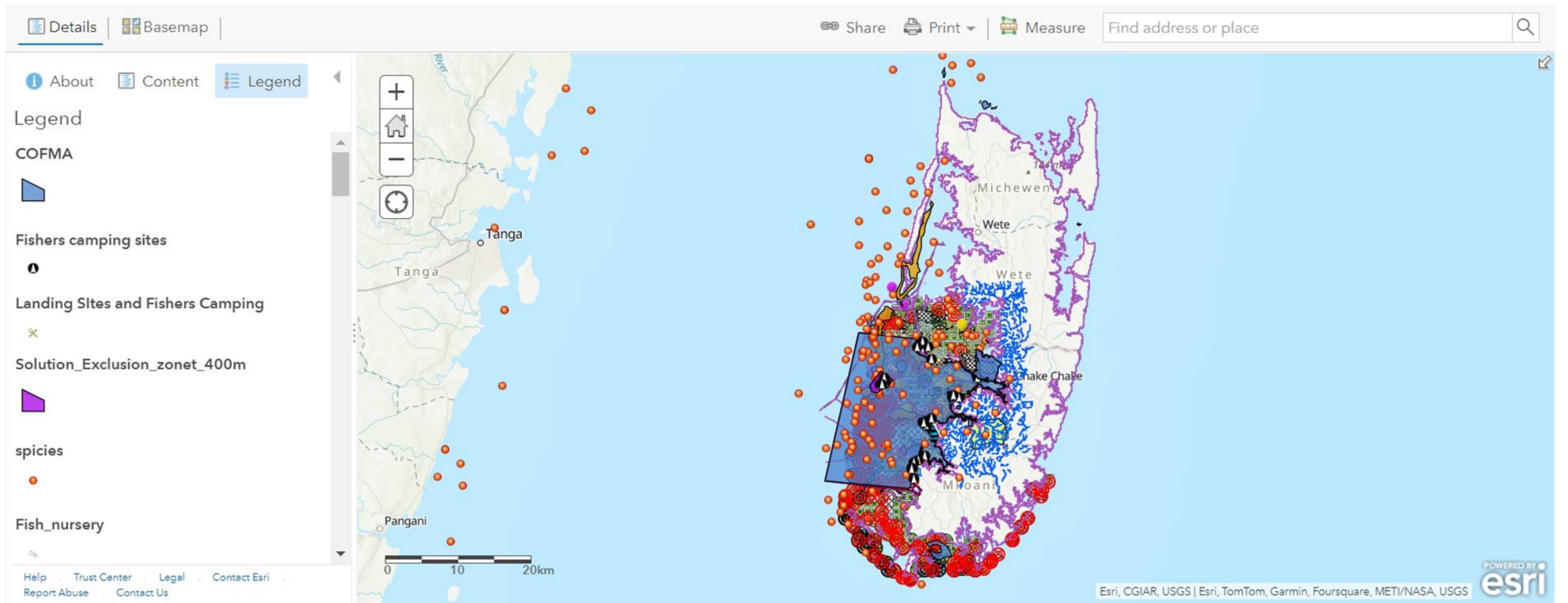
Present the reviewed, evaluated, and summarized results from the scenario calculations.

Outcome: A Present the results from the impact assessment evaluation calculations

Local Marine Spatial Plan PECCA Area 3

Home ▾ Local Marine Spatial Plan Interactive Atlas for PECCA Area 3 in Zanzibar

Open in Map Viewer Modify Map 👤 Sign In



<https://nairobi.maps.arcgis.com/home/webmap/viewer.html?webmap=bbbfddc465c8424a8e17a69f4f24266e>



SWIOFC-NC PP2



Dashboards Dynamic Visual Reporting

New & Improved

- Attribute Updates
- **Mobile**
- Splash Screens
- **Theming and Styling**
- Living Atlas
- **3D**
- Time Zone Support

Coming

- Improved Map Tools
- Automation
- Multilingual
- Better Accessibility
- Export



Monitor Status

Visualize Trends



Manage Performance

Providing Relevant & Timely Information at a Glance

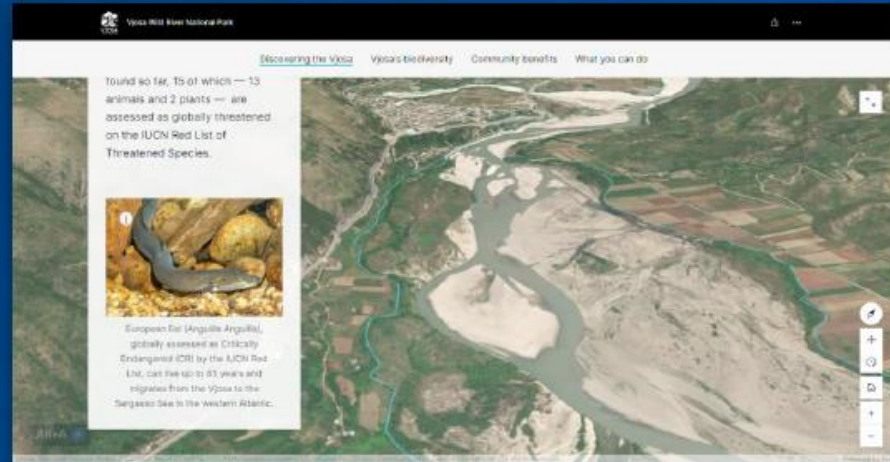
StoryMaps

Communicating Geographic Knowledge Widely

Put Maps at the Center of Your Story

New & Improved

- Tables
- **Offline Briefings**
- Pop-Up Enhancements
- **Media Actions**
- Styles & Themes



Map Choreography



Coming

- Charts
- Templates
- Mobile App
- Map Tour Updates



Map Interactivity



Briefings

Growing Rapidly
Millions of Stories Published

Survey 123

ArcGIS Survey123 ▾

Overview

Resources



ArcGIS Survey123

ArcGIS Survey123 is a simple and intuitive form-centric data gathering solution. Create, share and analyze surveys in just three easy steps.



SWIOFC-NC PP2

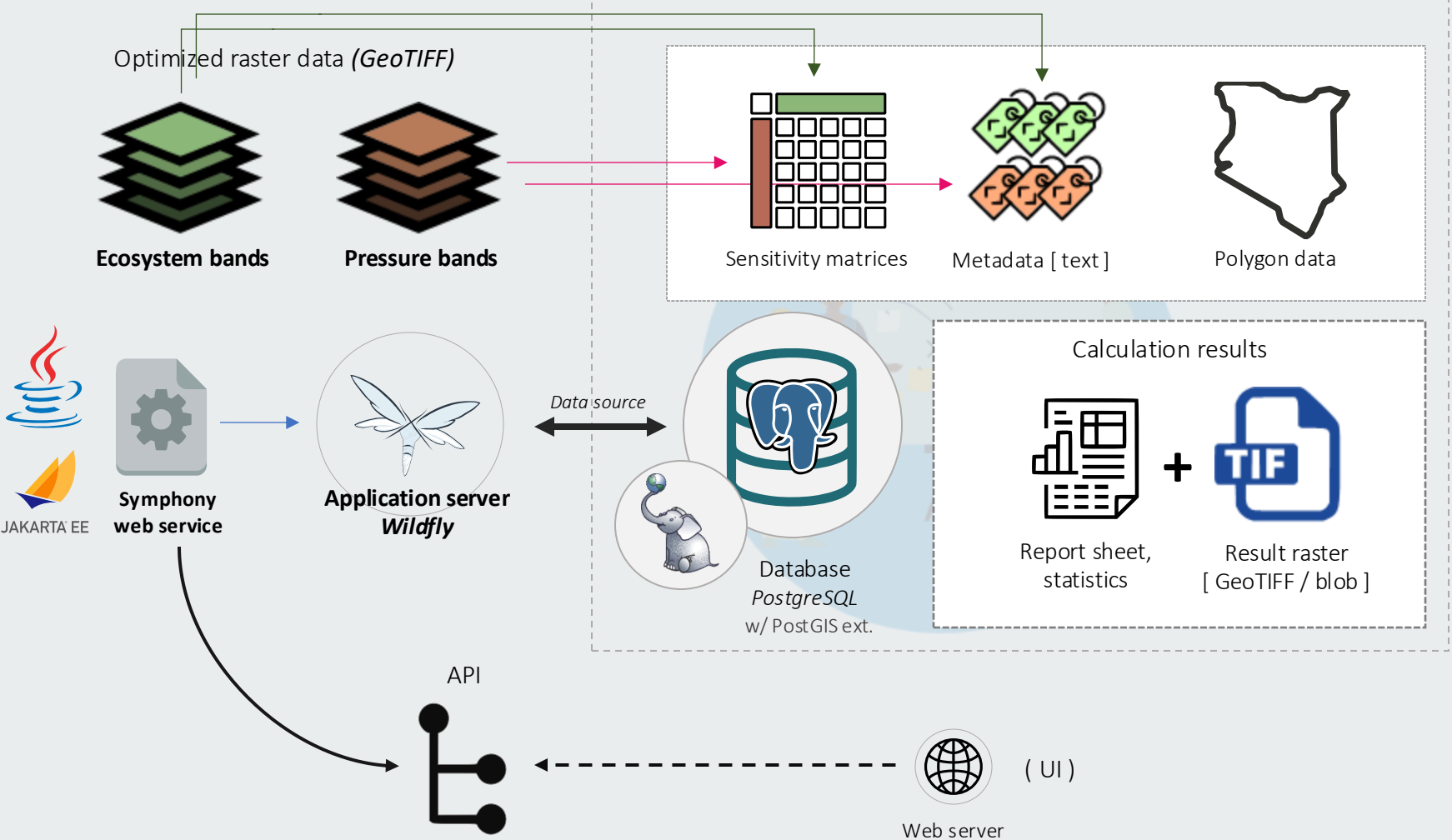


Swedish Agency
for Marine and
Water Management

ACP MEAs 3

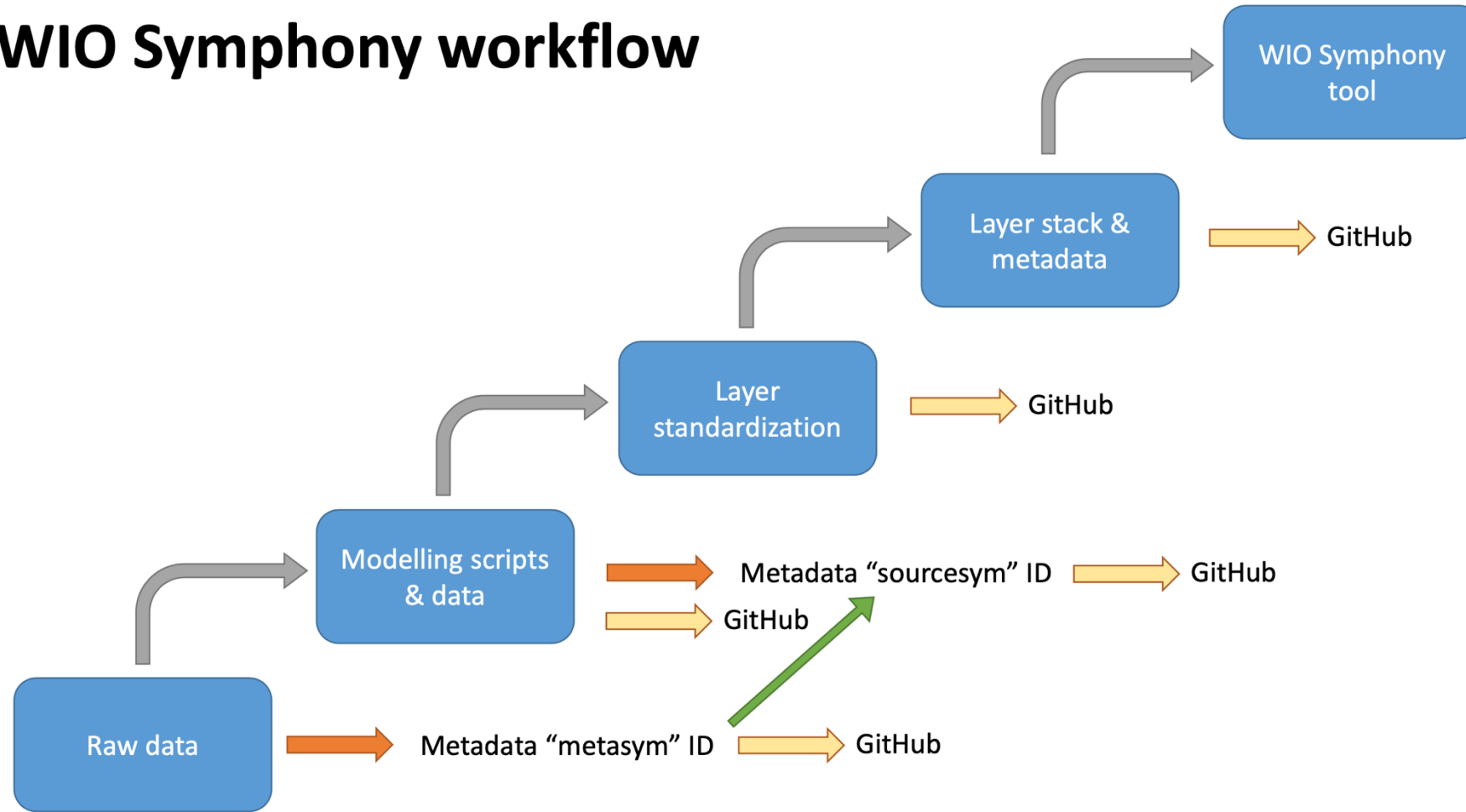
www.acpmeas.com

Serverside Architecture



GIS Session

WIO Symphony workflow





Thank you. Merci. Obrigado. Asanteni.

Eunice King'ori
eunice.kingori@un.org

United Nations Avenue, Gigiri
PO Box 30552 – 00100 GPO Nairobi, Kenya

nairobiConvention.org