

MARINE SPATIAL PLANNING WORKSHOP


THE STATUS OF DEVELOPMENT OF ENVIRONMENTALLY SENSITIVE AREA MAPS IN TANZANIA

Dar es salaam, Tanzania , 28 – 29 March 2019


**By: Elias John Chundu (GIS Expert),
National Environment Management Council (NEMC)**



PRESENTATION OUTLINE

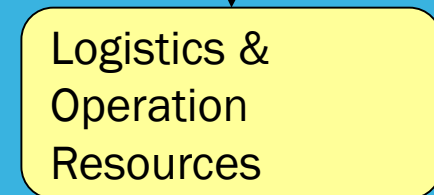
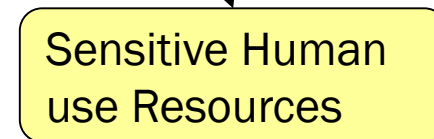
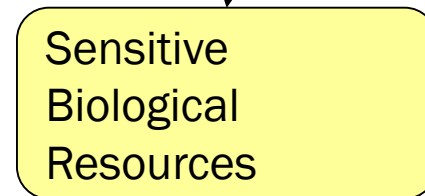
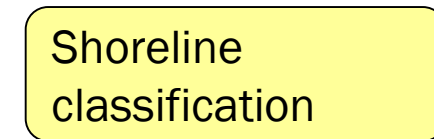
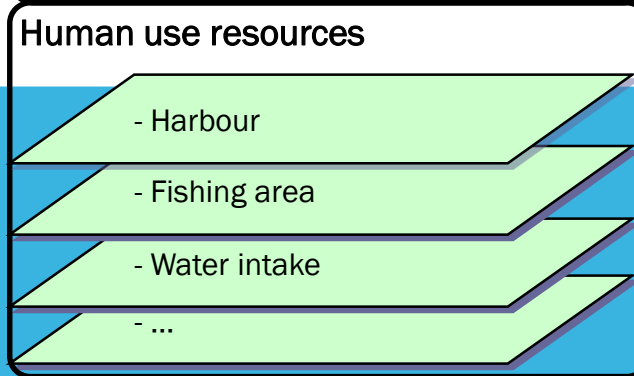
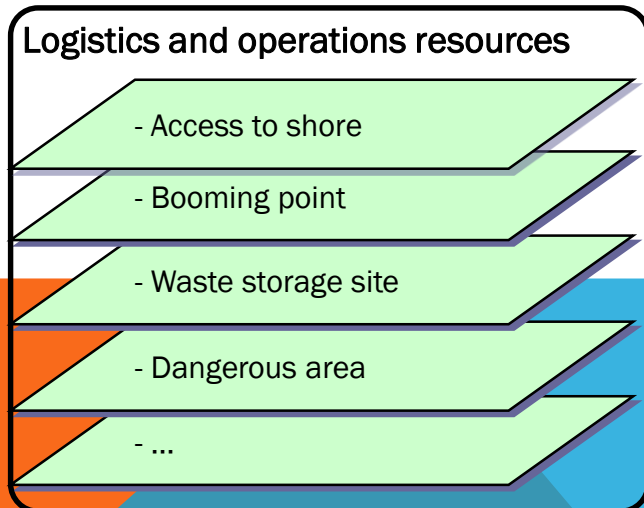
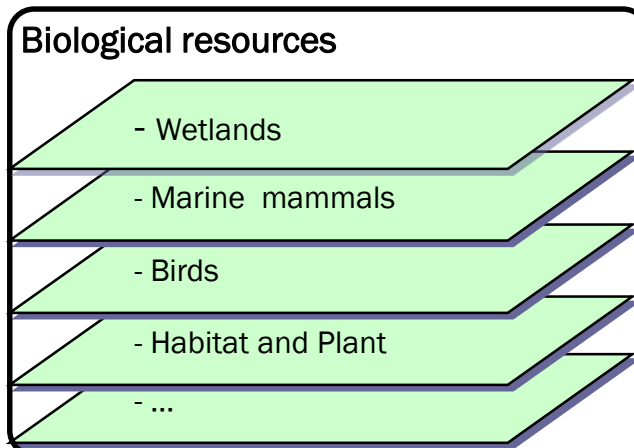
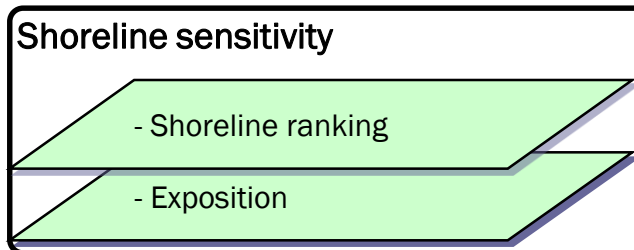
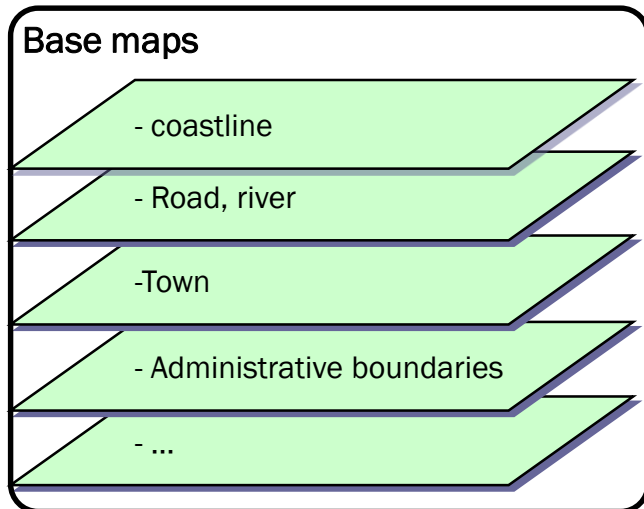
- The previous Initiatives**
 - Current Initiatives and Status**
 - Opportunities**
 - Challenges**
 - Recommendations**
- 

1: THE PREVIOUS INITIATIVES

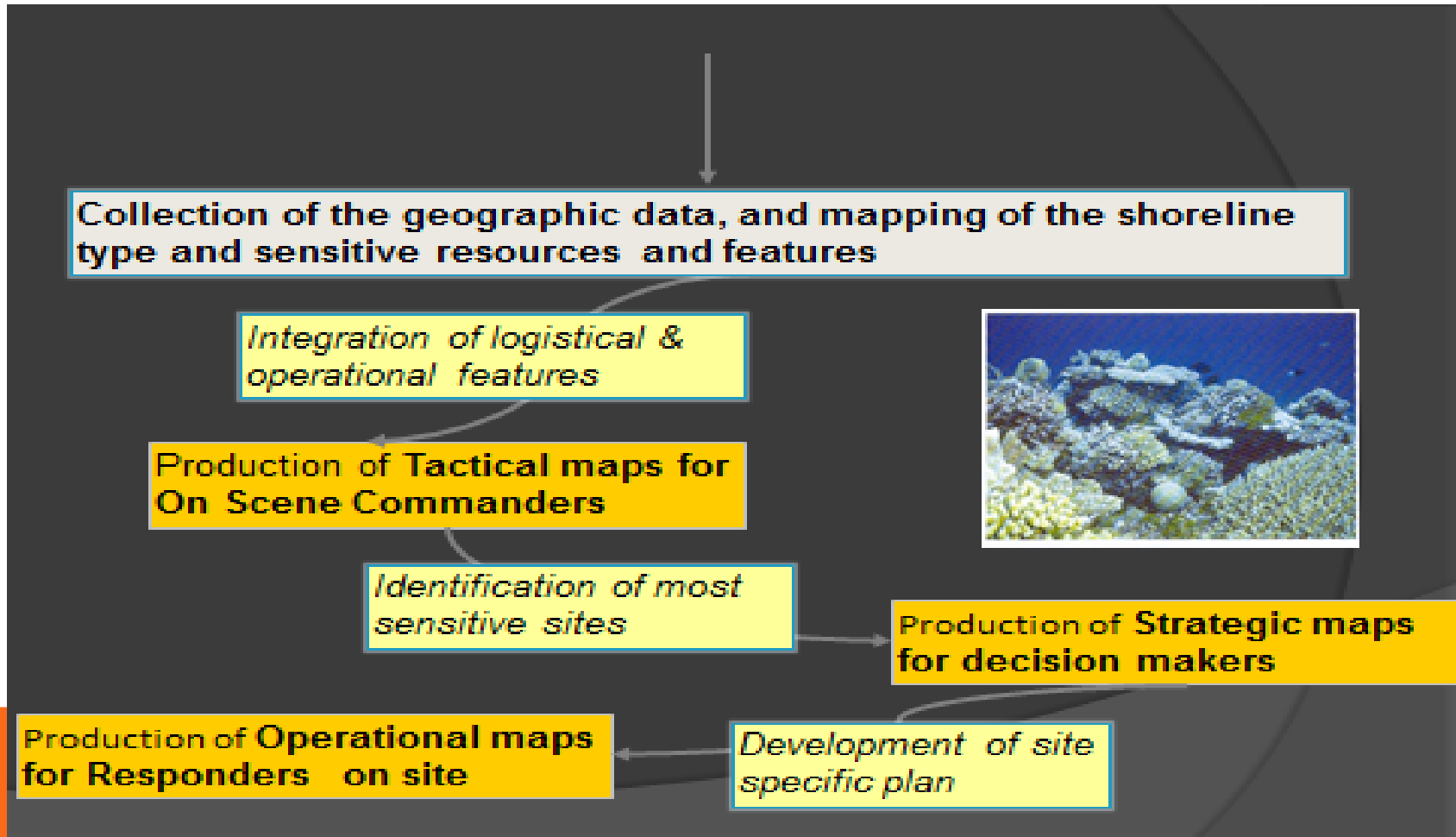
- ❑ Environmentally Sensitive Area maps developed during implementation under the GEF- Western Indian Ocean Marine Highway Development Coastal and Marine Contamination Prevention Project in 2011**
 - ❑ Focal Point Institutions: The National Environmental Management Council (NEMC) and the Surface and Marine Transport Regulatory Authority (SUMATRA)**
 - ❑ Maps were developed as annexes to the NOSRCP for Oil Spill pollution prevention**
- 

1: THE PREVIOUS INITIATIVES CONT.....

ESA MAPS BASED ON:-



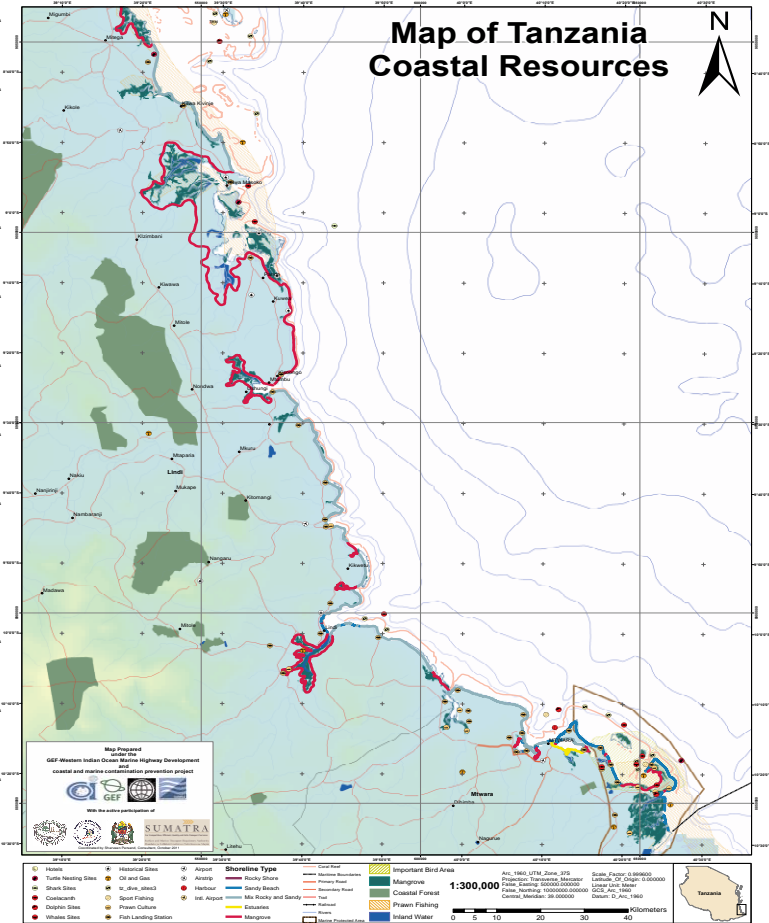
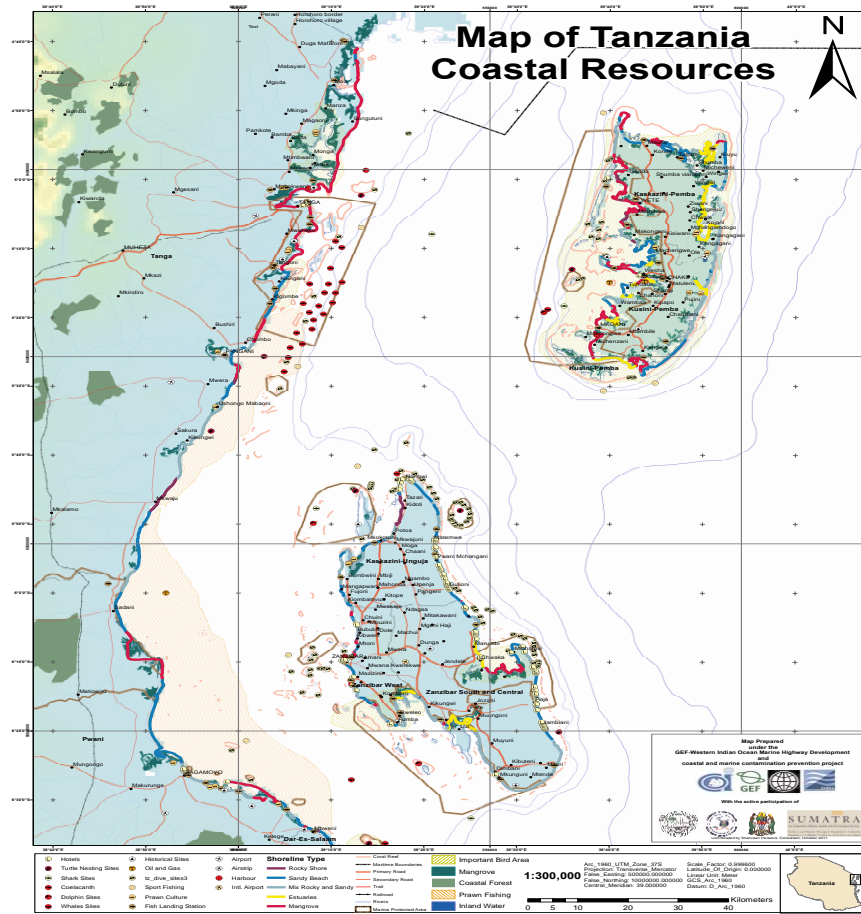
1: THE PREVIOUS INITIATIVES CONT..... TYPES OF MAPS



1.: THREE TYPES OF ENVIRONMENTALLY SENSITIVE AREA MAPS

- **Tactical Maps**
- **Strategic Maps and;**
- **Operational Maps**

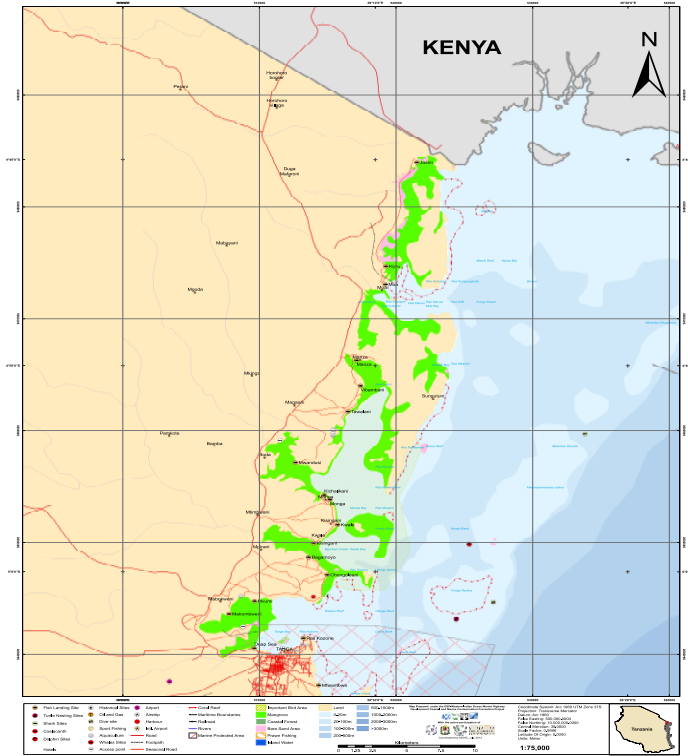
TACTICAL MAPS



OPERATIONAL MAPS

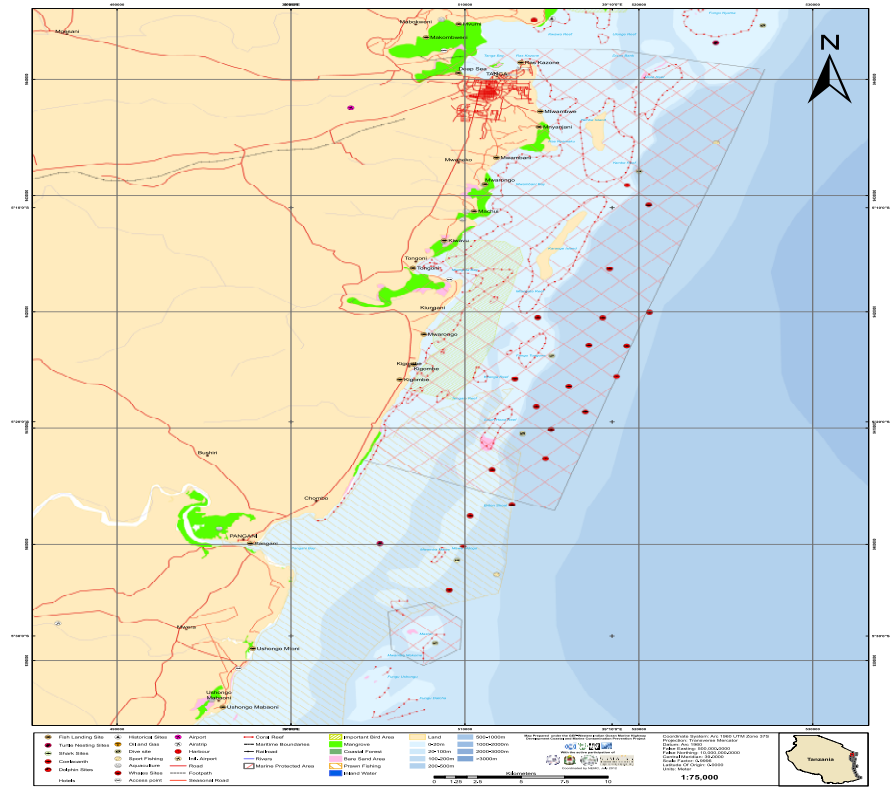
Tanzania Operational Map for Oil Spill Response

Map 2 of 20



Tanzania Operational Map for Oil Spill Response

Map 2 of 20




2: CURRENT INITIATIVES AND STATUS

Under the support of Oil for Development project (Phase I&II)

The aim:

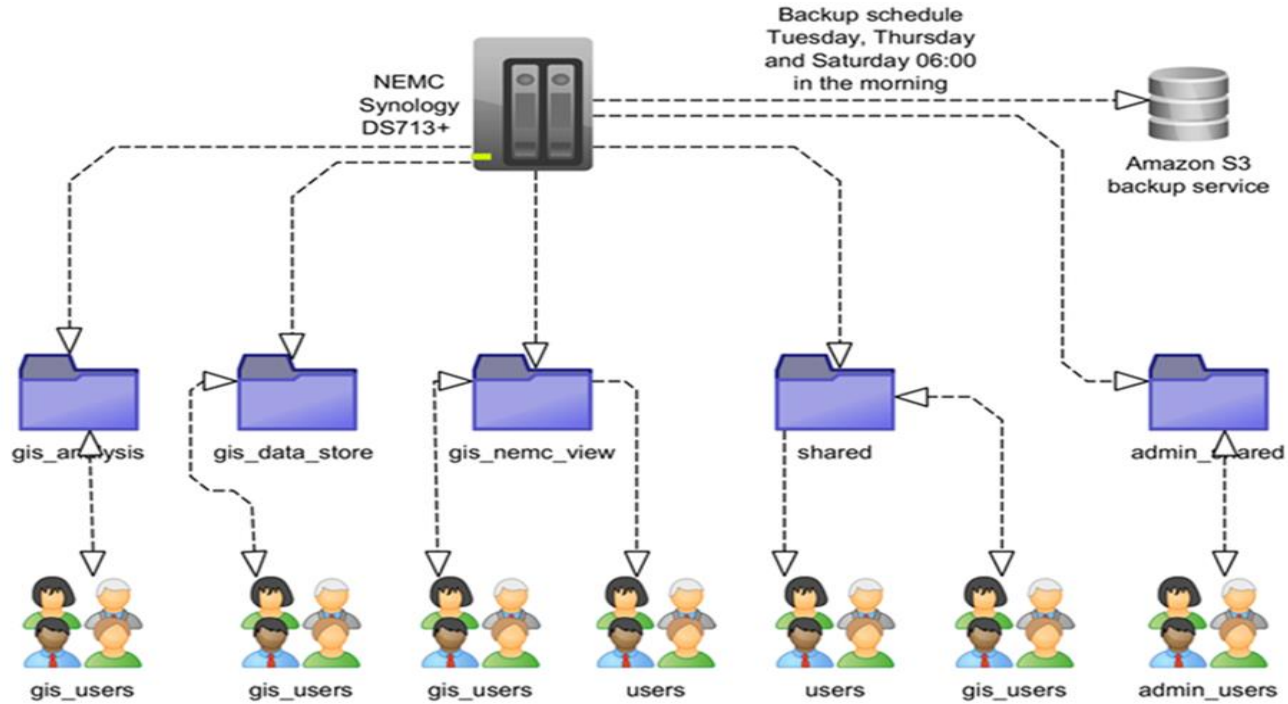
- ❑ Update the existing Spatial Data and ESA Maps,**
- ❑ Atlas map of Tanzania Coastal Resources (Onshore, Offshore, terrestrial),**
- ❑ Online Dissemination of Geospatial Data and ESA Maps into the Geonode Platform**

2: CURRENT INITIATIVES AND STATUS CONT... ACTIVITIES

- Coastal marine dataset study conducted by COWI (To all Government and private Institution)**
 - Collection of some Dataset to update previous work (ESAs)**
 - Documentation of Geospatial data (Existing and new datasets) (Metadata creation)**
 - Storage of Documented dataset into NAS (Network Attached Storage)**
 - Development of Geonode platform**
- 

2: CURRENT INITIATIVES AND STATUS CONT....

NAS (NETWORK ATTACHED STORAGE)




2: CURRENT INITIATIVES AND STATUS CONT....


UPLOADED DATASET IN GEONODE (STILL IN PROGRESS)

The screenshot displays the GeoNode web interface. The browser address bar shows the URL: `maps.tanzaniae.in.net/maps/?limit=100&offset=0`. The page title is "Explore Maps". On the left, there is a "Cart" section with the text "Add resources through the 'Add to cart' buttons." Below it are "Filters" including "TEXT", "CATEGORIES", "KEYWORDS", "OWNERS", "DATE", "REGIONS", and "EXTENT". The main content area shows a list of maps with a total of 27. The first map is titled "Category:Location" and has "No data" listed. It was uploaded by echundu@yahoo.com on 6 Sep 2016. The second map is titled "Category:Ocean" and was also uploaded by echundu@yahoo.com on 6 Sep 2016. The third map is titled "Category: Geoscientific information" and was uploaded by ed@coyoteb@gmail.com on 6 Sep 2016. The Windows taskbar at the bottom shows the time as 4:36 PM on 9/15/2016.


3: OPPORTUNITIES

- ❑ Marine resources geospatial information is very important especially to NEMC, the custodial of environmental information – to be shared with other Institutions/Sectors**
 - ❑ Helps management and planning of coastal and marine resources (sector specific areas identified)**
 - ❑ Protection of marine resources especially during oil spill pollution**
 - ❑ Helps to answer the question of where and which type of resource is available at a certain area**
 - ❑ Used data set for zoning mariculture and aquaculture areas**
- 

4: CHALLENGES

- Available data set still not enough and even if available most of them are outdated**
 - Insufficient fund to collect data and updating ESAs**
 - Data accessibility from Institutions /data sharing is still a problem**
 - No common protocol for sharing data**
 - Platform to share data**
- 

5: RECOMMENDATION

- A need to update geospatial dataset and maps for pollution preparedness (oil and gas exploration activities) and increasing shipping in Dar es Salaam, Tanga, Zanzibar and Mtwara port**
 - Develop fundable projects that will support in data collection and updating ESAs**
 - Develop a common protocol for data sharing**
 - Develop platform to share data among Institutions/sectors**
 - Institutions Capacity Building**
- 

THANK YOU FOR LISTENING
END OF PRESENTATION