

Towards Integrated Spatial Planning for Sustainable Management of Coastal and Marine resources in KILIFI county, Kenya



*7th WIOSAP PROJECT STEERING COMMITTEE
DARES SALAAM, TANZANIA
29TH JANUARY 2025*

World Wide Fund for Nature (WWF - KENYA)

Siro Abdallah

Why the Project

Overall Objective:

- By 2020 Kilifi County Spatial Plan is effectively implemented for sustainable management of coastal and marine resources and enhanced socio-economic development.

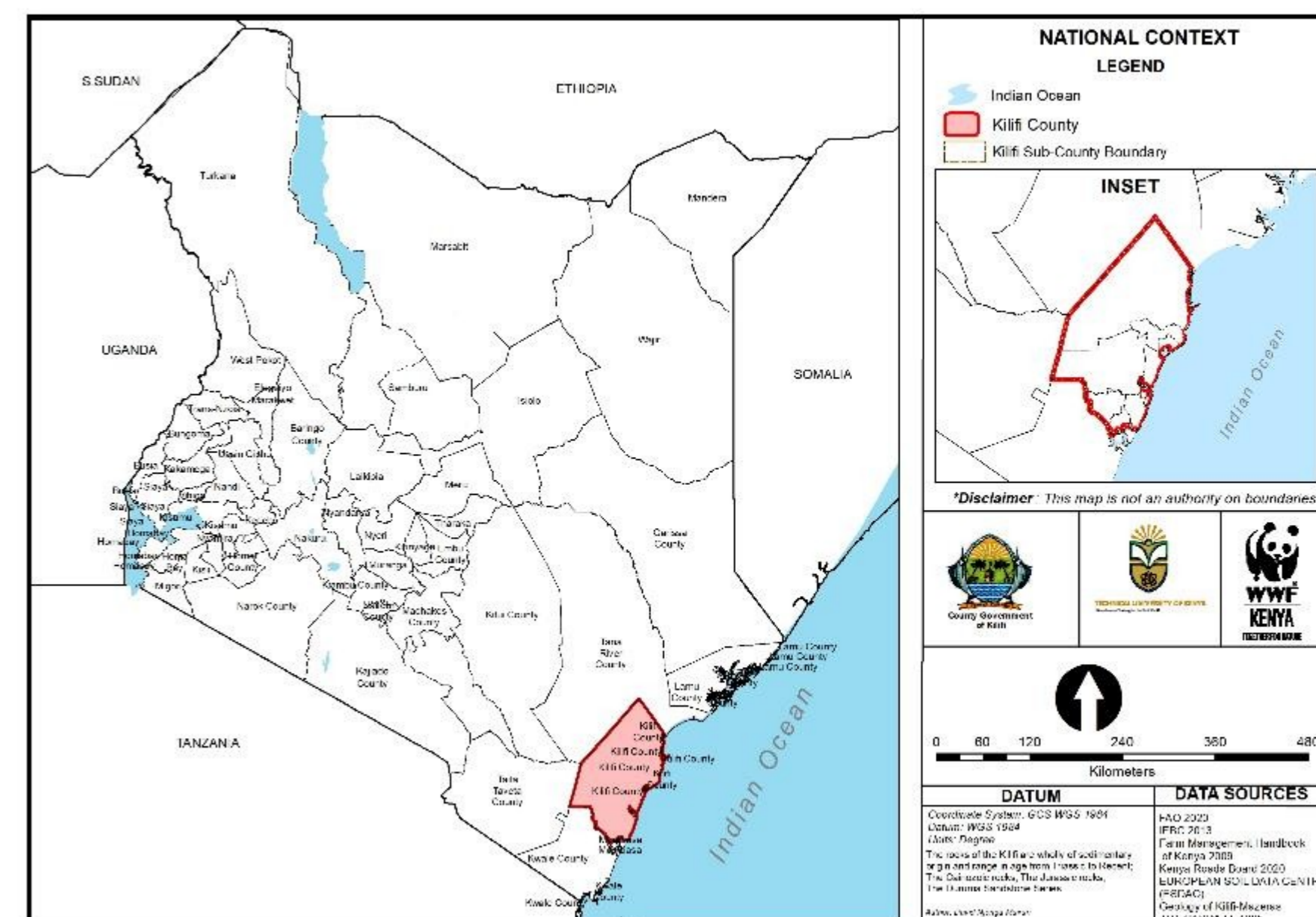
Specific Objective:

- Objective 1:** By 2020, a comprehensive Kilifi County Spatial plan is finalised and endorsed for operationalization by Kilifi County Government and stakeholders.
- Objective 2:** By 2020, there is improved capacity of county government and key stakeholders to deliver and implement the Kilifi county spatial plan.
- Objective 3:** By 2020, there is a fully operational GIS Lab in Kilifi County for integrated data management and information sharing.
- Objective 4:** By 2021, at least Critical Ecologically Significant Areas (CESA) is secured in Kilifi County.



Where:

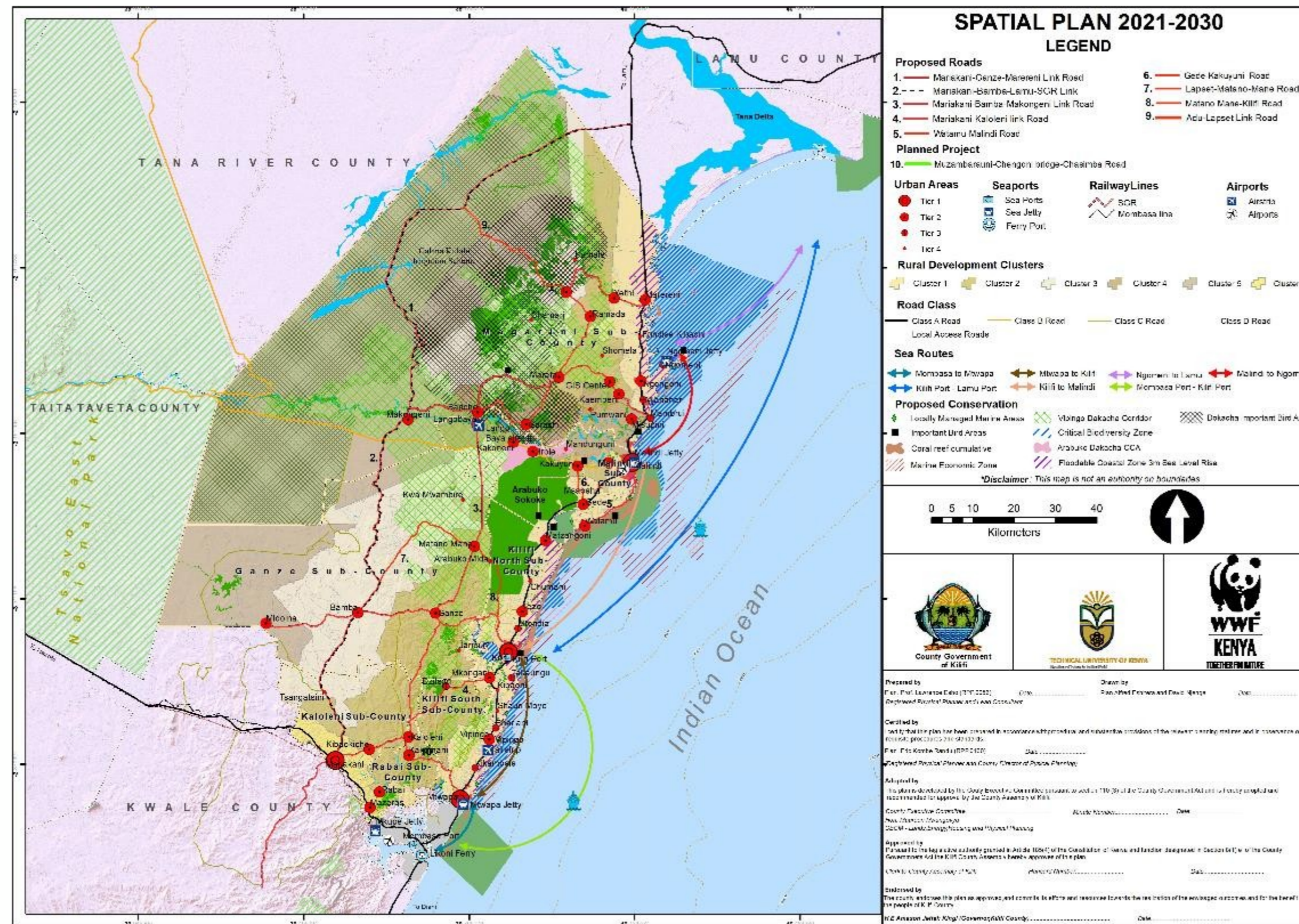
- ✓ KILIFI County - Kenya



Partners:

- County Government of Kilifi
- National Land Commission
- Technical University of Kenya
- Cordio East Africa
- Nature Kenya

Key Achievements



1. Kilifi County Spatial Plan Developed 2021 - 2030:
Incorporating local, national and global conservation priorities.

2. Land use zone maps and CESA maps (Marine, Terrestrial) developed and incorporated into Kilifi County Spatial Structure/Plan
E.g. Incorporating Near-shore Marine Spatial Planning framework.

3. Multi-stakeholder Engagement :
Forums to sensitise, review, enhance and validate the Kilifi CSP was conducted in an all elaborate participatory learning manner ensuring integration.



4. Digital Data Management Systems Strengthened : State of the Art Kilifi GIS Lab secured, Installed, Launched and Operational

Outcome Area : Key institutions based along the coast and relevant county departments are strengthened to deliver effective management of coastal and marine resources.

Outcome Area: Effective continuous data collection, analysis and dissemination for programmes and functions within Kilifi County



Key Lessons Learnt

❑ Co-Design creates high chances to Sustainability

- ✓ The reason we arrived to hybrid is because we designed together.
- ✓ We adopted a non traditional **Hybrid / multi-stakeholder** led approach (an NGO led process led by government and public institutions) in the design and development of Kilifi CSP. This prompted high buy-in by relevant stakeholders while fostering technology transfer (learning by doing) especially among various government entities involved in the process leading to smooth handover and possibly implementation process.



Project Sustainability



THE KENYA GAZETTE

Published by Authority of the Republic of Kenya

(Registered as a Newspaper at the G.P.O.)

Vol. CXXVII—No. 7

NAIROBI, 14th January, 2025

Price Sh. 60

GAZETTE NOTICE No. 373

THE PHYSICAL AND LAND USE PLANNING ACT (Cap. 303)

INTENTION TO PREPARE A STRATEGIC NATIONAL PLAN *The Kenya Marine Spatial Plan*

PURSUANT to the provisions of section 13 (g) of the Physical and Land Use Planning Act, 2019, as read with section 2, Part 1 of the Fourth Schedule of the Constitution, notice is given that the National Director of Physical and Land Use Planning intends to prepare the above plan in collaboration with the State Department for the Blue Economy and Fisheries (SDBE&F) with effect from the 14th January, 2025.

The purpose of the Plan is:

- (a) To provide a marine spatial framework for integration and co-ordination of social-cultural, environmental and economic policies for accelerated development of the blue economy.

The objectives of the Plan are:

- (a) To provide a framework for an integrated approach to planning, management and governance of the coastal and marine space and resources for the benefit of people and environment;
- (b) To strengthen collaboration and partnerships amongst government agencies, county governments, coastal communities and other stakeholders in coastal and marine space and resource management; and
- (c) To promote coastal and marine biodiversity conservation and sustainable utilization of coastal and marine resources for socio-cultural and economic benefit.

The information to be set out in the plan shall include:

- (a) The geographical scope of the planning area covering the land-sea interface, inland waters up to the high-water mark adjacent to coastal counties of Mombasa, Kwale, Kilifi, Tana River and Lamu, the territorial sea, Exclusive Economic Zone (EEZ) and the Extended Continental Shelf;
- (b) The planning period which shall be twenty (20) years (2025–2045); and
- (c) The issues that shall be covered in the plan include: analysis of marine resource use and conflict, marine infrastructure,

conservation and protection of the environment and critical ecosystems, extraction of marine based resources, renewable energy, tourism and recreation, climate change, adaptation and resilience among others; development challenges, opportunities and alternative interventions.

This is therefore to invite the public to submit views within the context of the purpose, objectives, scope and issues. Written submissions should be directed to the National Director of Physical Planning, 1st Ngong Avenue, Ardhi House, 5th floor, Wing A, Office No. 501 or P.O. Box 30450–00100, Nairobi or e-mail: ndpp@ardhi.go.ke not later than twenty-one (21) days from the date of this notice.

Dated the 14th January, 2025.

PERIS MANG'IRA (DR.),
National Director of Physical and Land Use Planning.

GAZETTE NOTICE No. 374

THE CONSTITUTION OF KENYA THE COUNTY GOVERNMENTS ACT (No. 17 of 2012)

COUNTY ASSEMBLY OF TURKANA STANDING ORDERS COUNTY ASSEMBLY OF TURKANA

SPECIAL SITTINGS OF THE COUNTY ASSEMBLY

PURSUANT to Standing Order No. 34 of the County Assembly of Turkana Standing Orders, it is notified to all Members of the County Assembly and the general public that Wednesday, 15th, Thursday, 16th and Friday, 17th January, 2025 have been appointed as days for special sittings of the County Assembly. The special sittings will be held at the County Assembly Chambers, Lodwar, commencing at 9.30 a.m. and 2.30 p.m. (for the morning and afternoon sittings, respectively) for the purpose of consideration of the following priority businesses—

- (a) Report of the Finance, Planning, Trade and ICT Committee on the Turkana County Annual Development Plan (ADP) 2025/2026

- (b) Turkana County Finance Bill (No. 5 of 2024) 2024

- (c) Turkana County Biashara Bill (No. 6 of 2024) 2024

Dated the 10th January, 2025.

CHRISTOPHER D. NAKULEU,
Speaker, County Assembly of Turkana.

PRINTED AND PUBLISHED BY THE GOVERNMENT PRINTER, NAIROBI



Knowledge Transfer : The hybrid model ensured streamlined technology transfer (learning by doing) to government entities/staff largely from Kilifi County ensuring easy handover and overall handling of the CSP implementation phase as well as management of the county GIS facility .

Funding by Ex-Chequer: The relevant county assembly committees and county directorate of planning were properly sensitised and are able to allocate resources through the ex-chequer for implementing the CSP without relying on NGO funding.

New Treasury Law: The new law restricts counties from accessing revenue allocation by demonstrating that the CIDPs has been informed by CSPs , this directly mandates counties to implement CSPs.

Strategic National Plan (MSP): By aligning to the national MSP process, Kilifi county has direct opportunity to review, integrate and implement its MSP & CESA priorities .

*Thank
you!*

