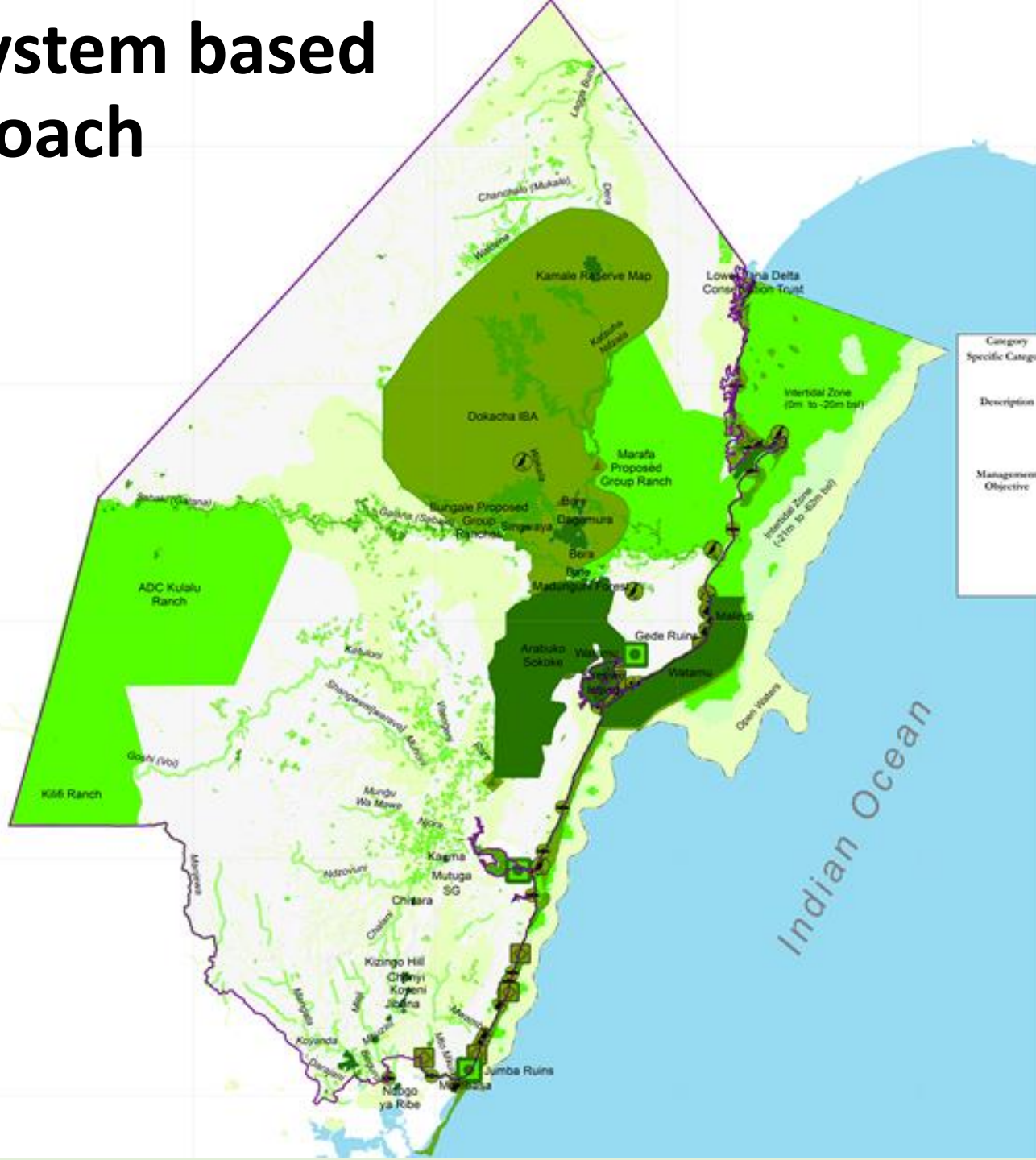


Ecosystem based Approach



Critical Ecologically Significant Areas

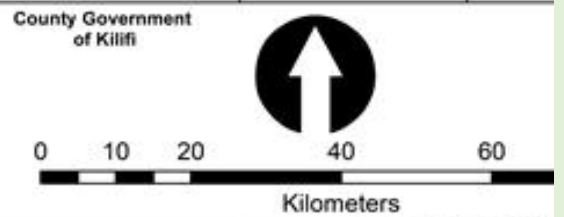
Kilifi County

LEGEND

- Historical Sites
 - Archeological Sites
 - Geological Sites
 - Important Bird Areas
 - Turtle Breeding Sites
 - Fish Landing Sites
 - Locally Managed Marine Areas
- CESA Category**
- Protected Areas (PA)
 - Critical Ecologically Significant Area 1 (CESA 1)
 - Critical Ecologically Significant Area 2 (CESA 2)
 - Ecologically Significant Area I (ESA I)
 - Ecologically Significant Area II (ESA II)

Category	Protected Area	Critical Ecologically Significant Areas 1	Critical Ecologically Significant Areas 2	Ecological Support Area I	Ecological Support Area II
Specific Category	Protected Area: PA	Critical Ecologically Significant Areas 1: CESA 1	Critical Ecologically Significant Areas 2: CESA 2	Ecological Support Area I: ESA I	Ecological Support Area II: ESA II
Description	Legally protected areas	Critical natural and semi-natural areas with little choice.	Critical natural and semi-natural areas with some choice.	Natural and semi-natural supporting areas, areas important for services or ecological infrastructure.	Impacted areas, for services or infrastructure.
Management Objective	Keep in a natural state. Sustainable resource use and conservation within strict management plans.	Keep landscape broadly natural. Manage for sustainable resource use.	Keep landscape broadly natural. Manage for sustainable resource use.	Keep landscape Ecologically functional. Manage to avoid significant impact on ecological functioning. Avoid incompatible land uses.	Maintain ecological and aesthetic values. Keep landscape broadly natural. Avoid incompatible land uses.

**Disclaimer : This map is not an authority on boundaries.*



DATUM	DATA SOURCE
Coordinate System: Arc 1960 UTM Zone 37S Projection: Transverse Mercator Datum: Arc 1960 False Easting: 500,000.0000 False Northing: 10,000,000.0000 Central Meridian: 39.0000 Scale Factor: 0.9996 Latitude Of Origin: 0.0000 Units: Meter	Kilifi County Government World Wide Fund for Nature Kenya