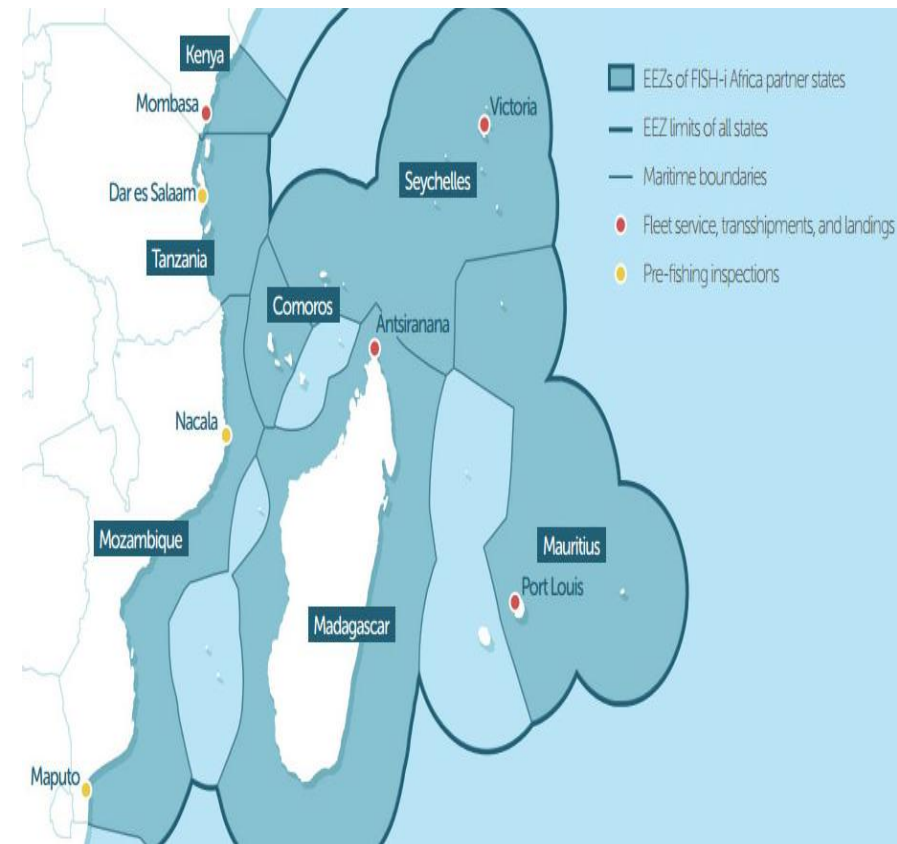


Status of Data and Information Management
in
Comoros

Introduction of Comoros



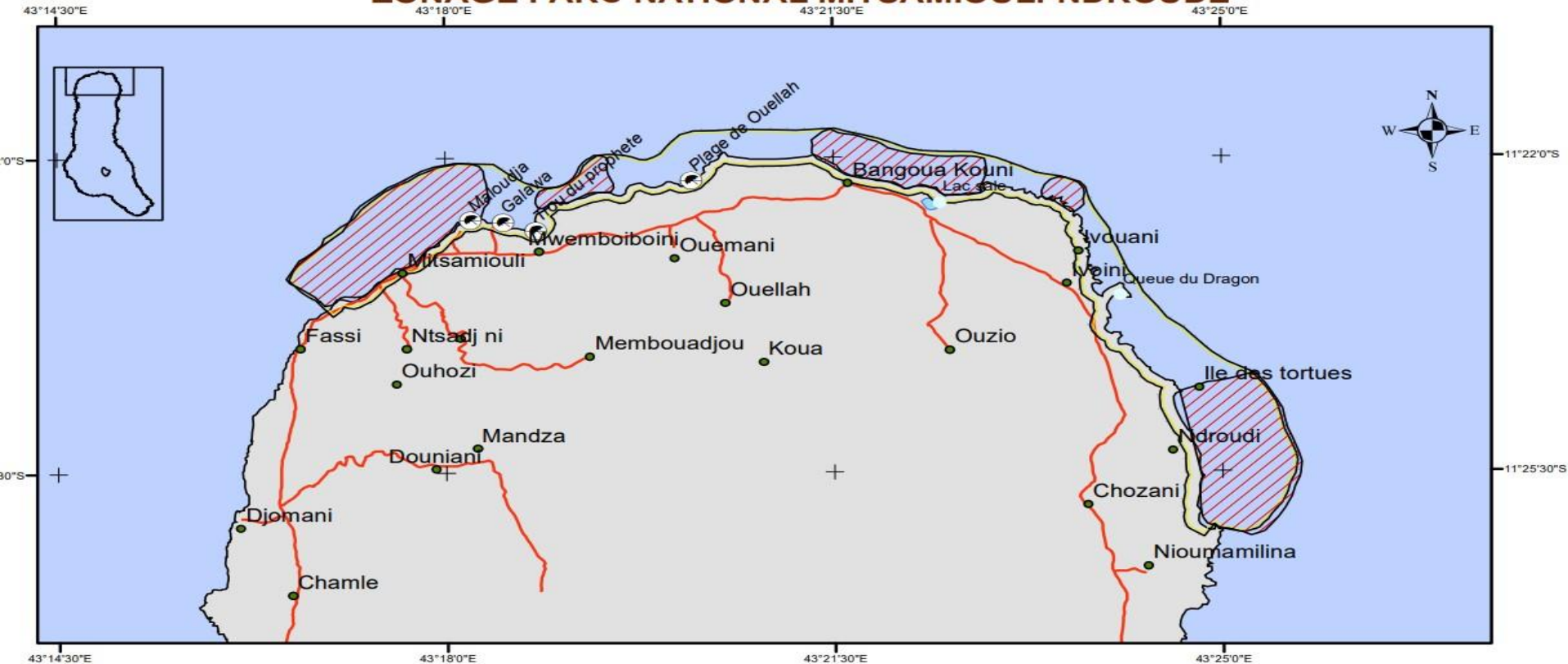
- ❖ Population : 832, 322 in 2018 with an annual growth rate of 2,4%.
- ❖ EEZ is estimated to 160 000 km², with a coastal line of 427 km.

Current Status

coastal and marine data available :

- National parks (shapefiles , pdf)

PARCS NATIONAUX DES COMORES ZONAGE PARC NATIONAL MITSAMILOULI-NDROUDE



Légende

- Monuments naturels
- Plages
- Toponymes
- Zone de conservation prioritaire
- Délimitation Parc Mitsamiouli-Ndroude

- Routes principales
 - Lac Salé
- 3 500 1 750 0 3 500 Mètres



Nair Aboubacar Allaoui
Expert SIG au Système National des Aires Protégées
aboubacarnair@gmail.com
+2693569495
Système de projection : UTM WGS84 38S
Source : Délimitation proposée: Cartes MAREX

- Biosphere reserve (shapefiles , pdf)

Reserve de biosphere

Ile de Moheli

340000

350000

360000

370000

380000

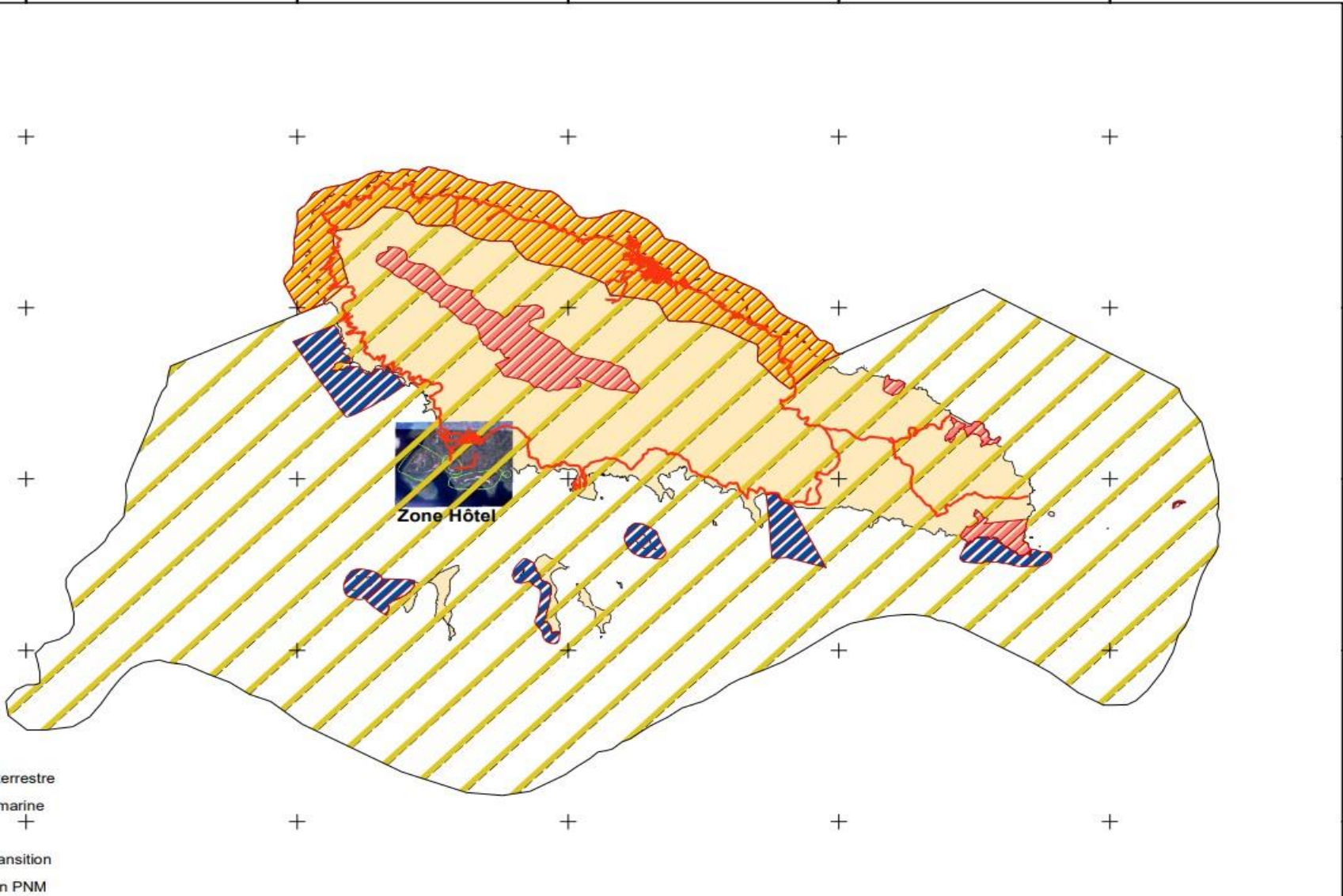
8647000

8640000

8633000

8626000

8619000



Légende

- Reserves terrestres
- Reserves marine
- Routes
- Zone de transition
- Délimitation PNM

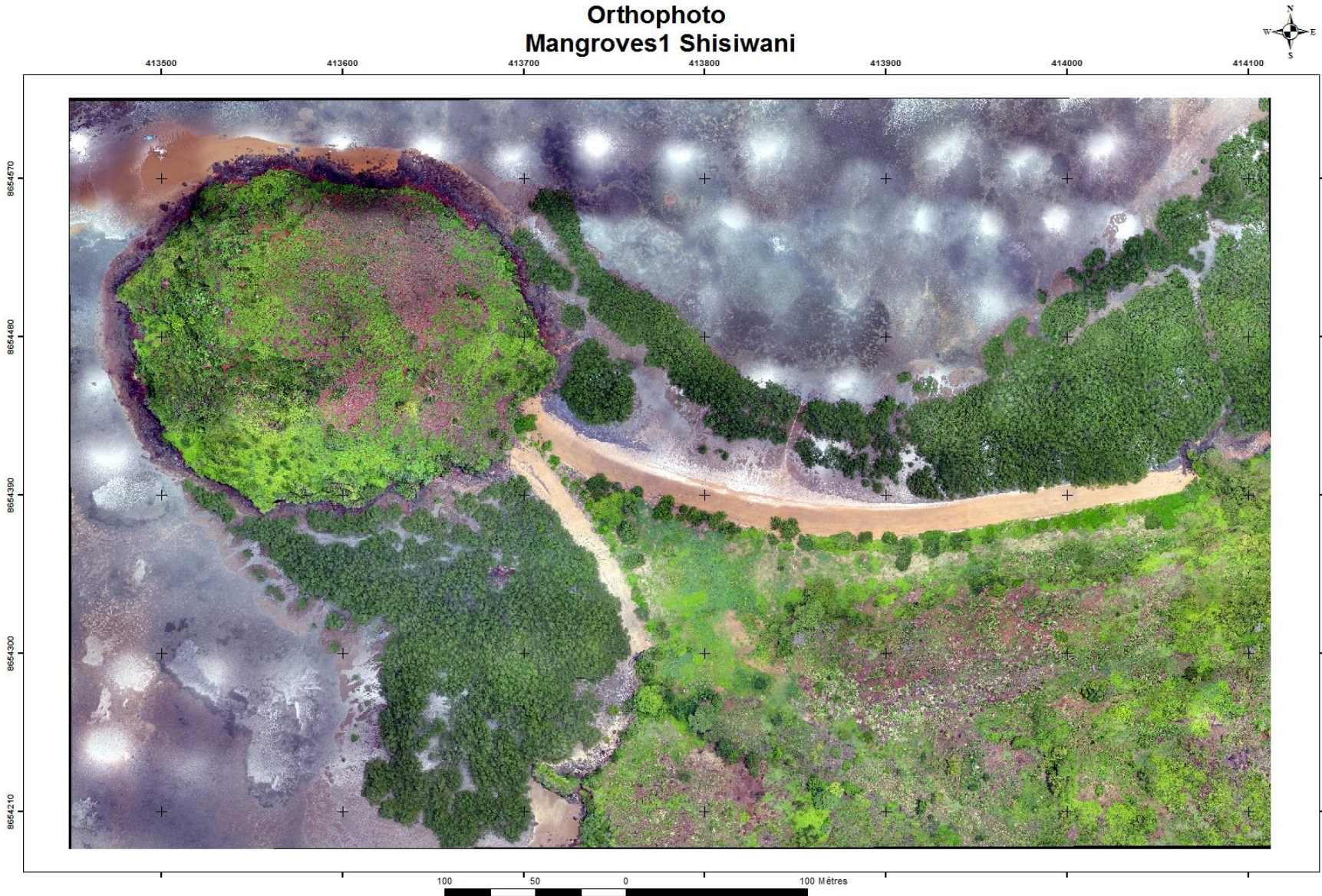
1:200 000

Nair Aboubacar
Expert SIG

- Coast line (shapefiles , pdf)
- Marine Habitat (shapefiles , pdf)
- Orthophotos 30cm resolution (geotiff)

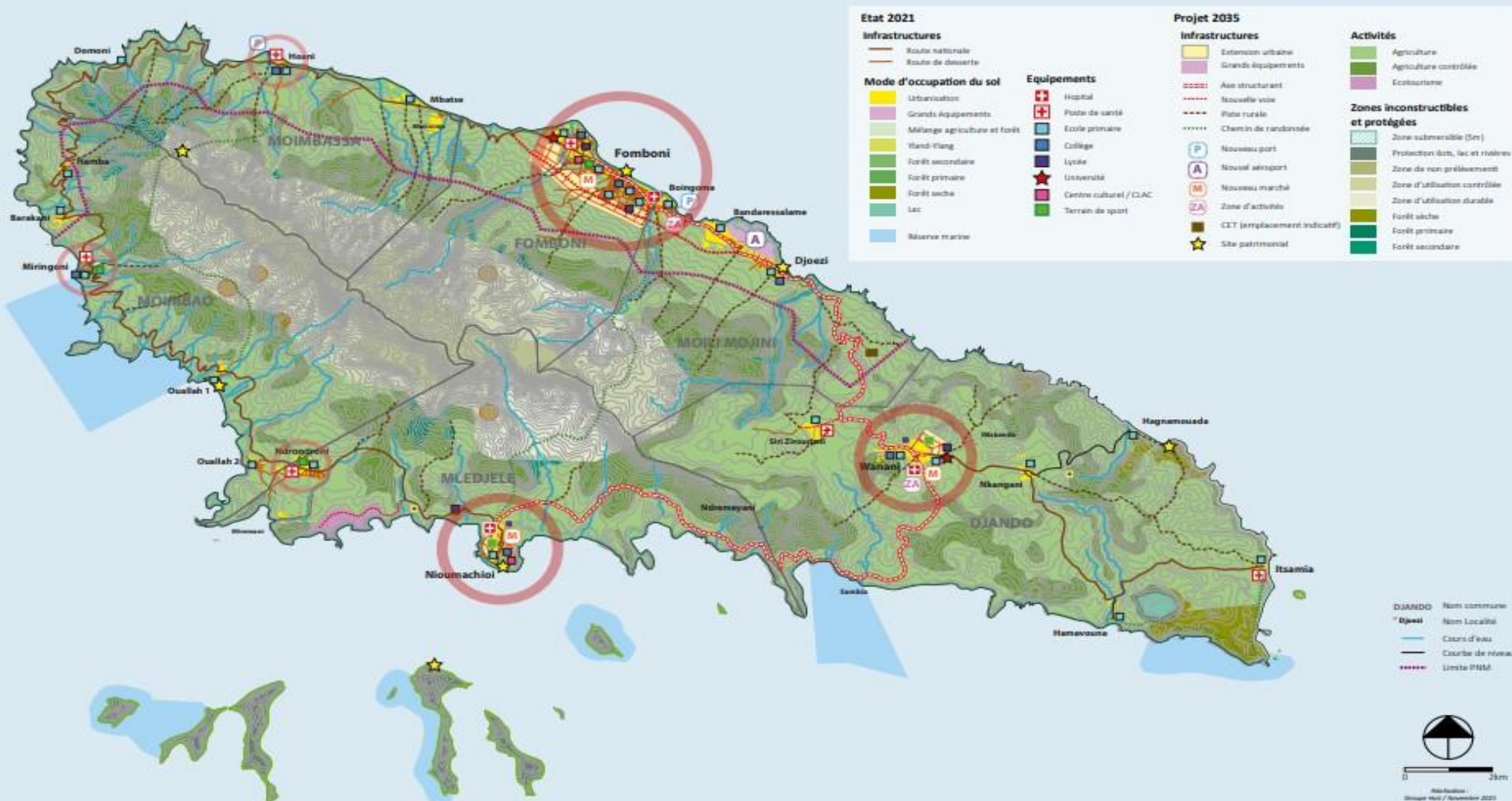


- Mangroves 5 cm resolution (geotiff , shapefiles)



- Bathymetric (shapefiles)
- Zoning of Mohéli Island land use plan (shapefiles , pdf)

SCHÉMA D'AMÉNAGEMENT DU TERRITOIRE DE MOHELI
Plan général d'aménagement et de destination des sols



- Socio-economic, statistics data for the fisheries sector (in a form of studies, reports, data base)
- General Diagnosis of coastal erosion and marine submersion on the Comorian coast



FIGURE 2-22. CARACTERISATION DE L'ALEA SUBMERSION MARINE SUR ANJOUAN POUR UN EVENEMENT USUEL FORT A L'HORIZON 2020 – ZONES LES PLUS IMPACTEES ENCADREES EN JAUNE

Key Authorities/ Institutional Framework

Lead ministry/agency for coastal and marine data and information management :

Ministry of Agriculture, Fisheries and Environment

other ministries and governmental agencies involved(e.g economic data)

General Directorate for Fisheries Resources and
General Directorate for Environment and Forestry

other stakeholders

National Institute for Statistics and /Centrale Bank of Comoros (Studies department)

Supporting Legal and Policy Framework

National Framework/Strategy on ocean and coastal information management

Absence of National Strategy on Ocean and Coastal information management

legislative/administrative framework

Ministerial decree to create :

GIS department within ministry of agriculture , fisheries and environment

Cartographic unit within the ministry of land and urban planning

policies relevant to coastal and marine data and information

No

Practical Application in the countries

- coastal and marine data and information system for dissemination :

No

- main global and regional data and information systems/hubs used :

IOC, IOTC, SWIOFC

Next Steps

- **Main challenges and gaps :**

Data (from collecting, analysing to storage)

Funds for supporting data collections.

Sustainability of the data managements tools

- **Required support :**

- Data collection support

- Technically and financial Support for the elaboration and implementation of a National Framework/Strategy on ocean and coastal information management.