



Innovative, resilient and sustainable coastal livelihoods in Kenya

By

Dr. Jacob Ochiewo

Kenya Marine and Fisheries Research Institute, P.O. Box
81651-80100 Mombasa

SWIOFC Nairobi Convention Partnership Meeting on
the Fisheries Environment Nexus; 26-28 September
2022, Mombasa, Kenya

Human Population

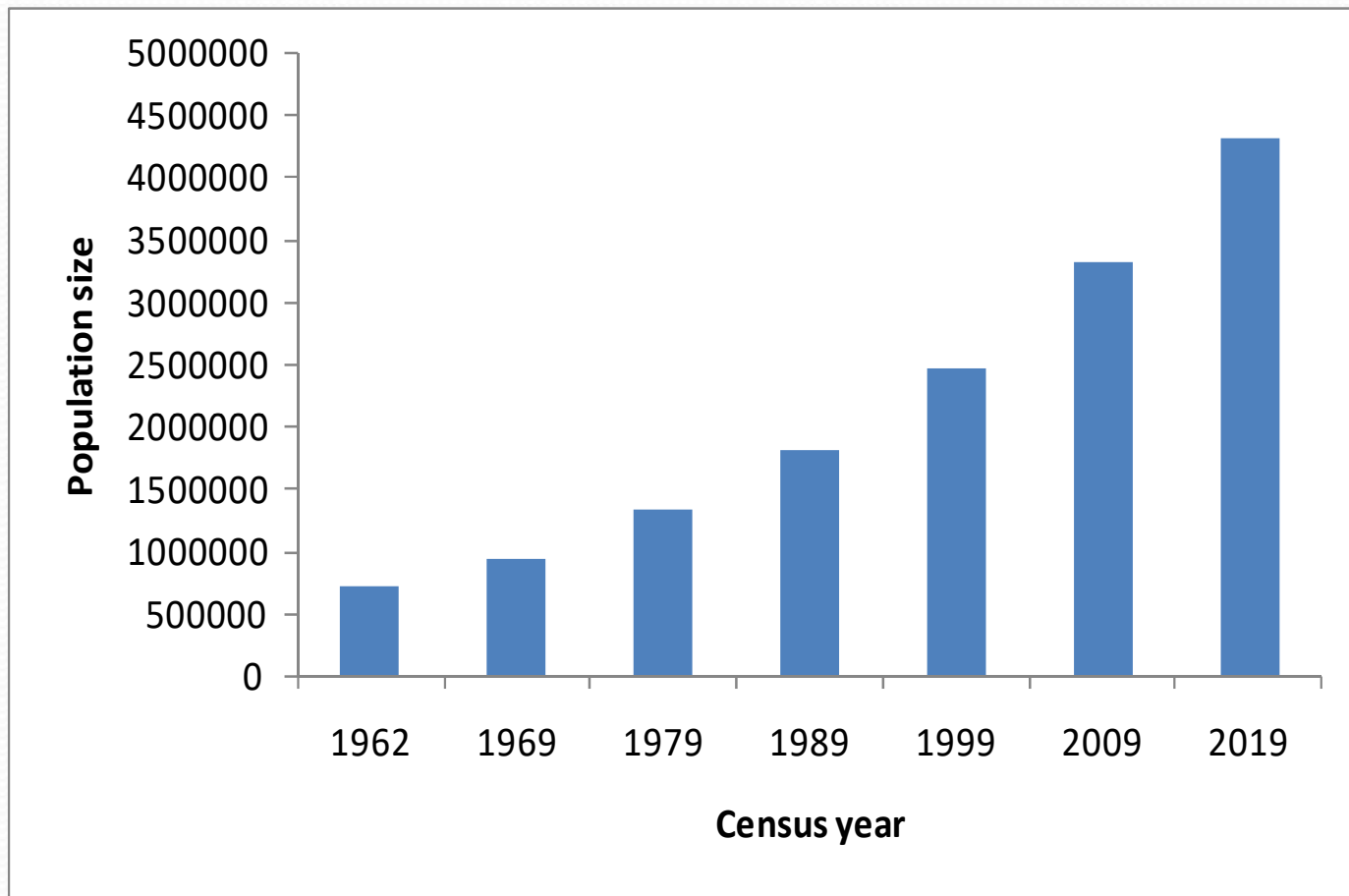


Figure 1: The coastal population growth pattern from the year 1962 to 2019 (Source: Based on data from KNBS 2019)

Coastal Resources





Benefits

- Livelihood & income – Fisheries, tourism, mangrove harvesting
- Shore line protection
- Biodiversity
- Climate change mitigation/adaptation
- Carbon offset



- **Livelihoods**



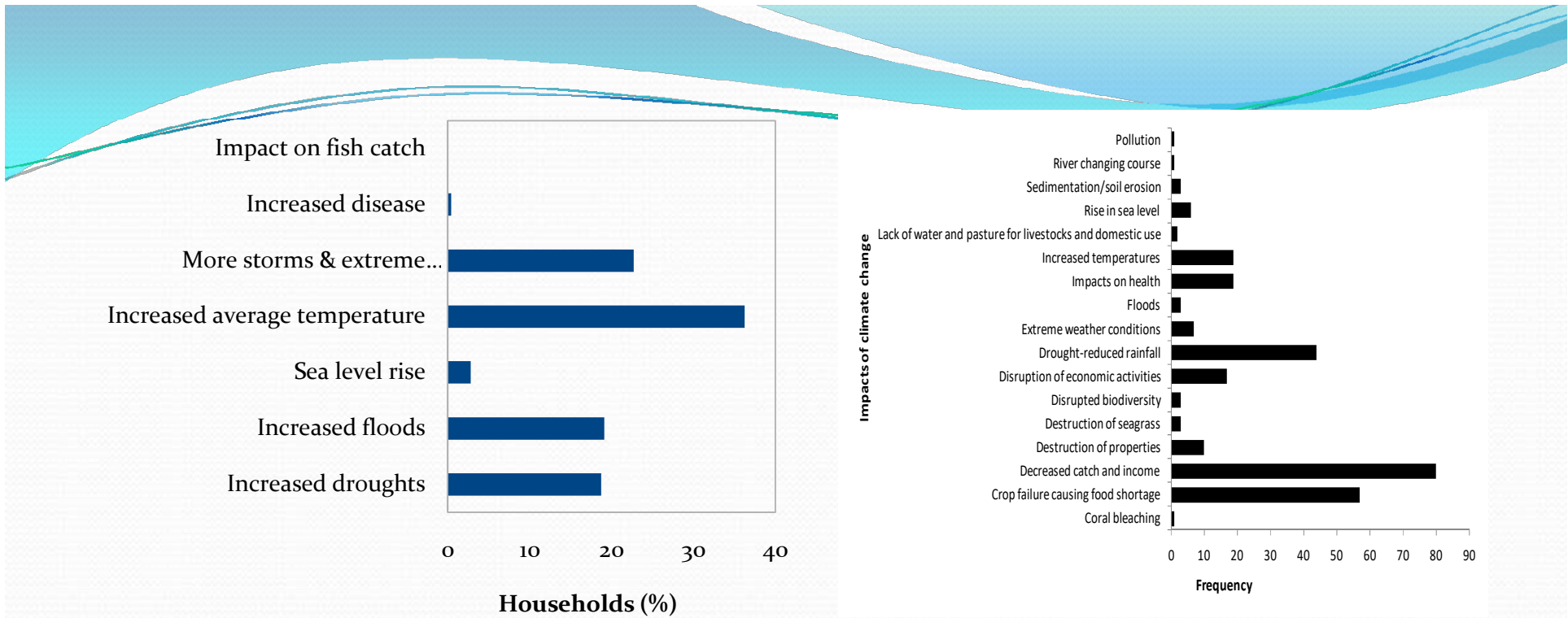






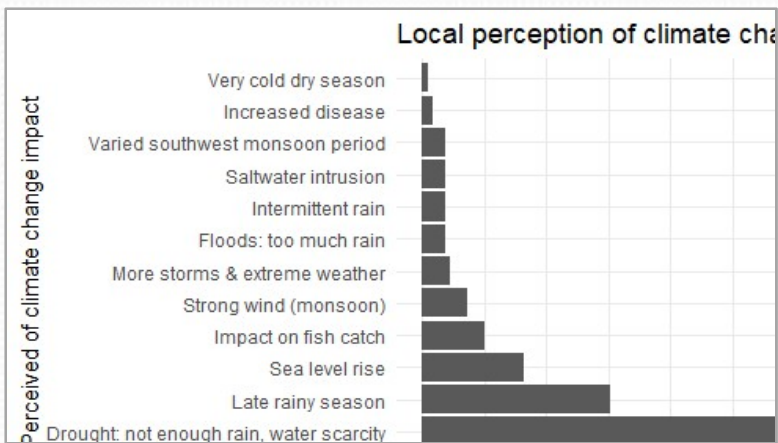
Threats to coastal & marine resources

- Climate change
- Overexploitation
- Conversion of mangrove areas to other uses
- Settlement
- Urban development
- Pollution



a) Mozambique

b) Kenya



c) Madagascar

Figure 2: Local perceptions of climate change impacts

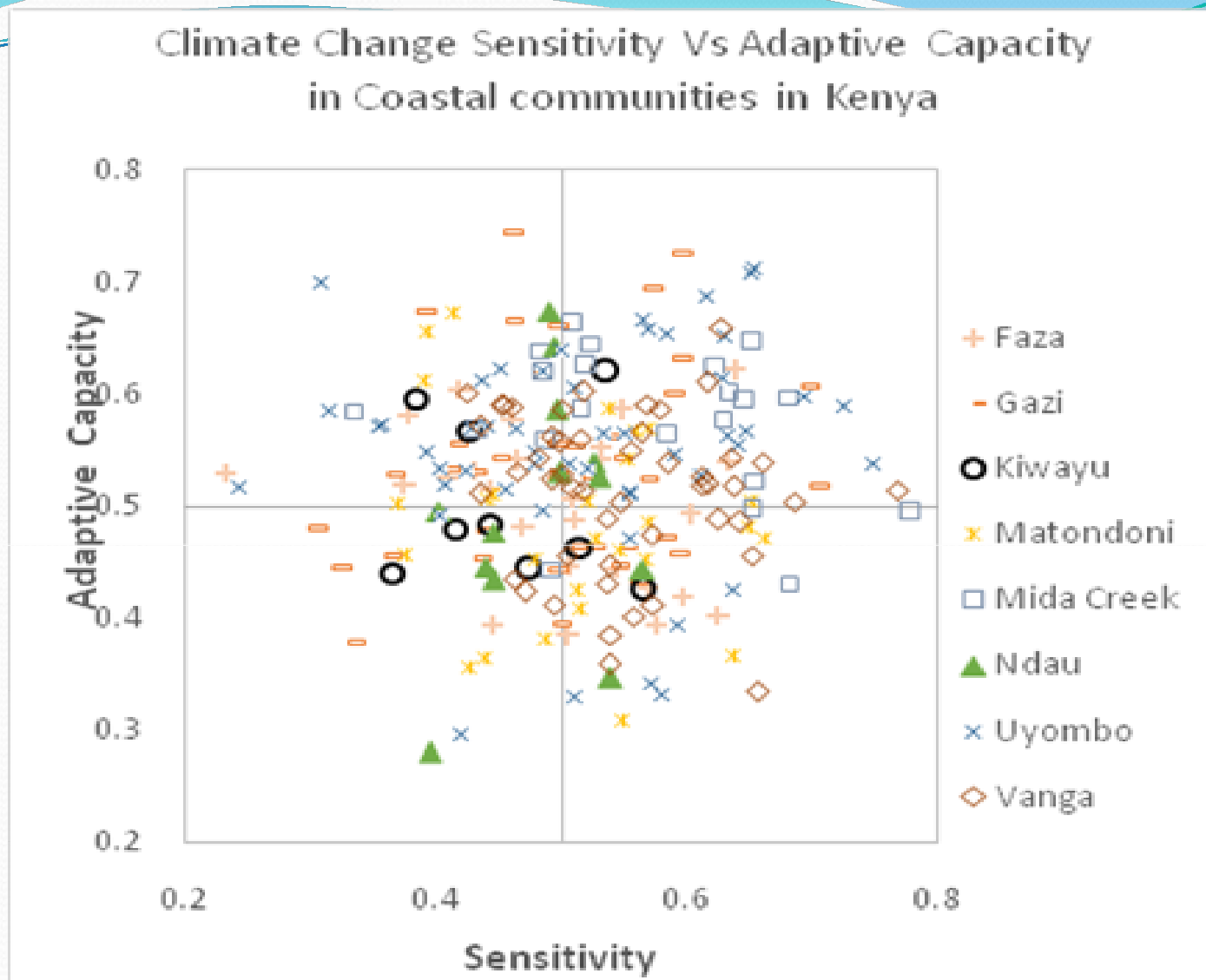


Figure 3: Sensitivity and adaptive capacity of coastal communities in Kenya to climate change impacts





***Innovative, resilient and
sustainable coastal livelihoods***

Seaweed Farming - Cottage industry in south coast



Seaweed products

- Soap
- Shampoo
- Shower gel
- Lotion



Innovative community based mangrove conservation and ecotourism initiative at Mida Creek (Crab Shack board walk and restaurant)





Innovative community based mangrove conservation initiative at Gazi and Vanga (Mkoko Pamoja – Carbon Offset Project)

- Preventing deforestation of local mangrove forests
- Community based reforestation
- Community development through support to education and provision of clean water



Innovative and resilient livelihoods

- Octopus closures by Shanga-Ishakani Women Group in Lamu County

Recommendation

- There is reasonable level of awareness of climate change by communities that depend on coastal and marine resources but there is need for interventions to build the adaptive capacity of these coastal communities.



THANK YOU