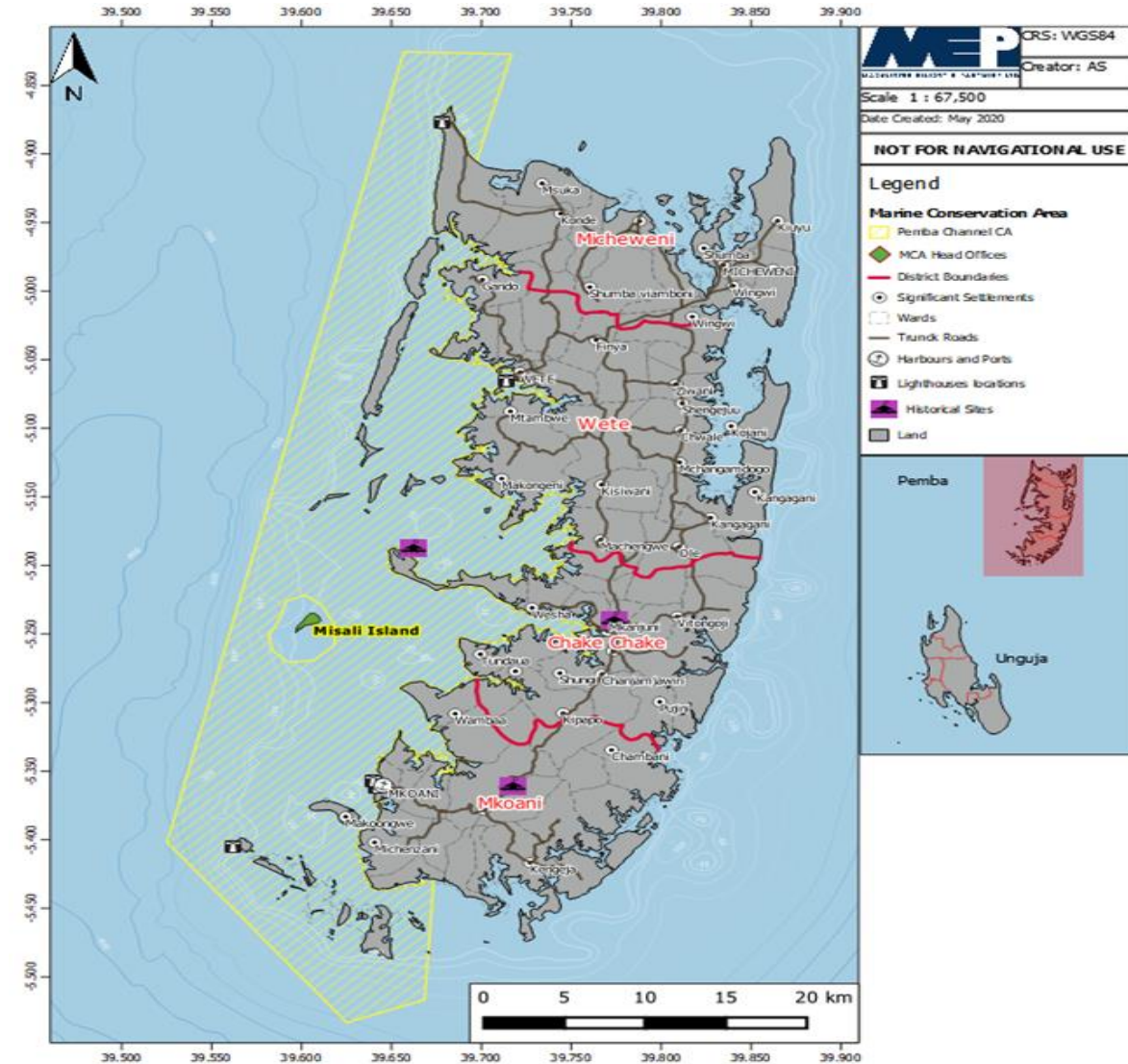


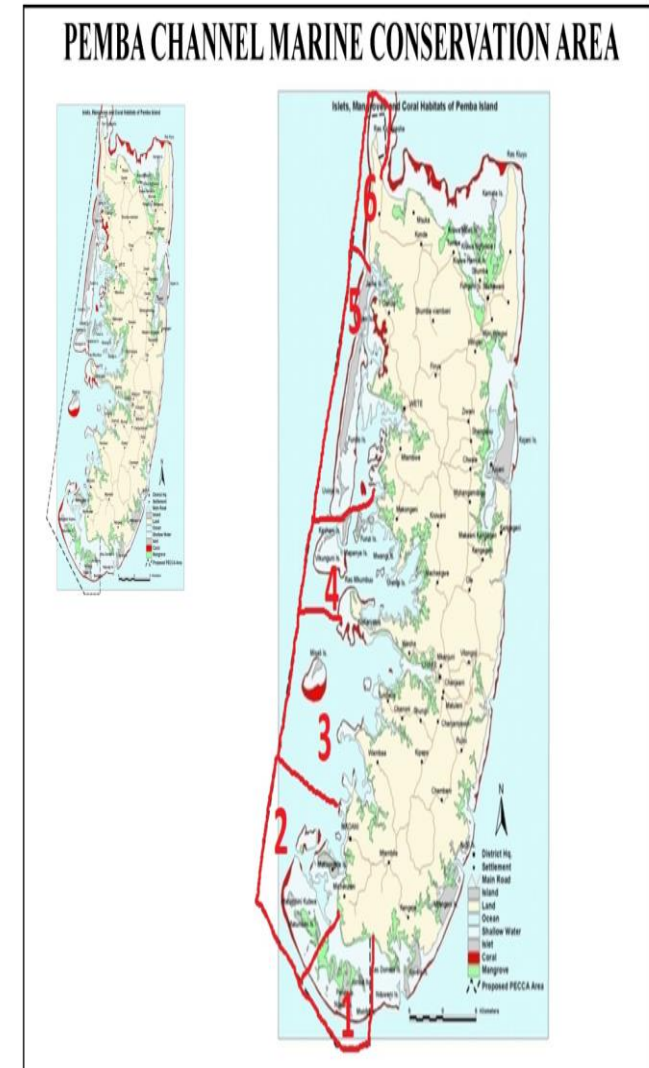


Strengthening community-based EBM approaches in Subsistence and Small Scale Artisanal Fisheries for Sustainable livelihoods and Management of Pemba Channel Conservation Area (PECCA), Zanzibar, Tanzania.
(SAPPHIRE -PECCA -PROJECT)



WHY PECCA

- ❑ Pemba is home to rich diversity of tropical marine life
- ❑ Coral reefs at PECCA are among the most diverse in East Africa.
- ❑ 400,000 People depend on healthy fisheries and coastal tourism
- ❑ Alarming increase of illegal fishing threatens the health of fish populations and endangers marine animal
- ❑ Biggest marine conservation area in Zanzibar 1000 km²





IMPLEMENTATION STRUCTURE

	Outcome	Spent budget (\$)
1	Enhanced fisheries and resources management mechanism established through co-management and functional network of Government, local community and partners.	7,000
2	Marine and coastal ecosystem conserved, and MCAs sustainably protected in PECCA unit	45,000
3	Local community livelihoods improved through introduction of alternative income generating activities	30,000
PMU		6820
	Total	82000



Implementation Status

S/N	Activity	Status
1	Integrate local community household waste and marine litter management practices to protect coastal and marine environment.	Completed
2	Support local fishermen in coral reefs protection	Completed
3	Community support and capacity building in sustainable seaweed farming and critical habitats	Completed
4	Support in provision of fish drying and storage equipment	Completed
5	Developing fishery closure guidelines	Complete/Subject to approval
6	Customization and mainstreaming of critical habitats guidelines in the fishery management plans	Complete/Subject to approval
7	Initiate fishery closure sites	Ongoing



Implementation Status

S/N	Activity	Status
8	Develop/update/revise integrated fishery management plan for the fishing communities in PECCA using, EBM approach for sustainable management of fisheries resources.	Ongoing
9	Support the collection, management and analysis of data and information for participatory and evidence-based MSP	Ongoing
10	Strengthen community fishery patrol and enforcement measures in PECCA Area.	Ongoing
11	Support local ecotourism development (Ecotourism zoning studies)	Not started
12	Establishing pilot sites for carbon trade in mangrove areas	Not started

Strengthening Fisheries Committee in Coral reef management and monitoring

- Conducted Survey on the use of destructive and Illegal fishing gears
- Area were divided in to two subzones, first zone will consist six Shehias Fisheries Committees and the second zone will contain 5 Shehias Fisheries Committees.
- Each zone will contain its own management and financial committee, security and monitoring committee and capacity to develop by laws
- Environmentally friendly fishing gears and monitoring equipment



Community Support and capacity building in seaweed farming

- Limited Private Sectors support in seaweed farming
- Climate change impacts affect the quality and quantity of the seaweed
- Training on growing seaweed in deep water



Integrate local community household waste and marine litter management practices

- 250 household involve in piloting
- Plastic wastes are transferred to plastic company for recycling
- Declining of the amount of plastic wastes on marine environment



Support in provision of fish drying and storage equipment

- Fish were dried in unhygienic conditions
- No proper packaging
- Low price



ASANTENI SANA

